

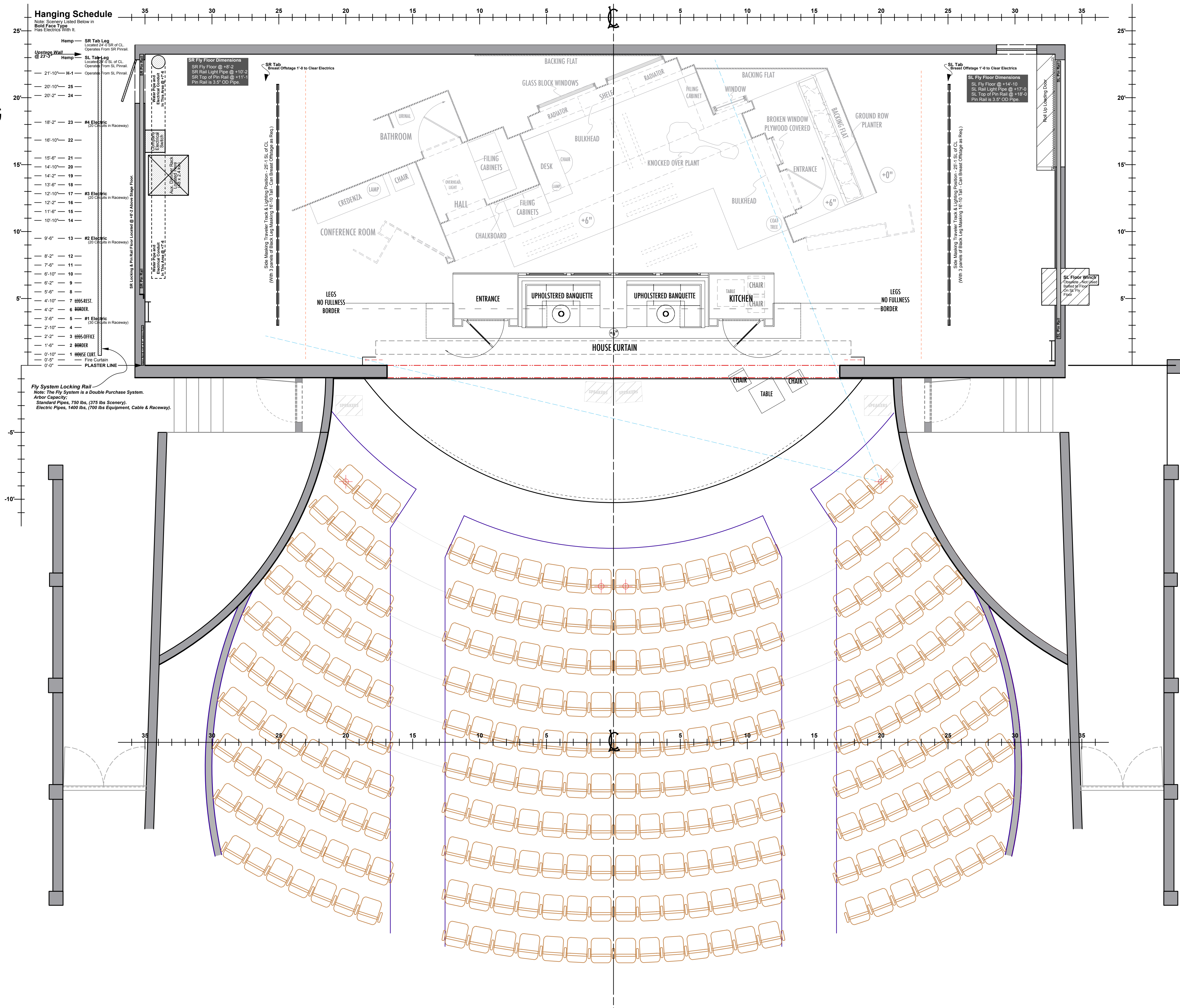
NOTES:

\*HOUSE CURTAIN IS THE FLAT, BLACK HOUSE CURTAIN IN STOCK.

\*CHINESE RESTAURANT UNIT SPLITS ON CENTER AND TRAVELS SL & SR FOR SCENE CHANGE.

\*MASKING LEGS FOR THE CHINESE RESTAURANT FLY OUT FOR TRANSITION INTO OFFICE; OFFICE MASKING LEGS FLY IN.

\*THERE IS NO CROSSOVER.



ANNE MUNDELL

412.260.4521  
AMUNDELL@ANDREW.CMU.EDU  
WWW.ANNEMUNDELL.COM

THE MALTZ JUPITER THEATRE PRESENTS  
**GLENGARRY GLEN ROSS**

WRITTEN BY: DAVID MAMET  
DIRECTED BY: J BARRY LEWIS

PRODUCTION TEAM

SCENIC DESIGNER  
ANNE MUNDELL  
ASSOCIATE SCENIC DESIGNER  
JOEY SARNO

The designer is responsible for the visual aspects of the production only, and the specification of the designer's designs relate solely to the appearance of the design and not to matters of safety. The designer agrees to make prompt correcting alterations to any specifications found to be incompatible with proper safety precautions

THE MALTZ JUPITER THEATRE

DATE: 12-01-2014

SCALE: 1/4" = 1'-0"

DRAWN BY: JMS

REVISIONS:

REVISION #1: 12.02.14

REVISION #2: 12.07.14

REVISION #3: 12.12.14

GROUNDPLAN-RESTAURANT

PLATE NO.

1

OF 14



**\*THERE IS NO CROSSOVER.**





GLENGARRY GLEN ROSS

THE MALTZ JUPITER THEATRE PRESENTS

WRITTEN BY: DAVID MAMEI

WRITTEN BY: DAVID MAMET  
DIRECTED BY: J BARRY LEWIS

SCENIC DESIGNER  
**ANNE MUNDELL**  
ASSOCIATE SCENIC DESIGNER  
**JOEY SARNO**

The designer is responsible for the visual aspects of the production only, and the specification of the designer's designs relate solely to the appearance of the design and not to matters of safety. The designer agrees to make prompt correcting alterations to any specifications found to be incompatible with proper safety precautions

**DATE:** 12-01-2014

**SCALE:**  $1/4" = 1'-0"$

DRAWN BY: JMS

REVISIONS:

REVISION #1: 12.02.14

REVISION #2: 12.07.14

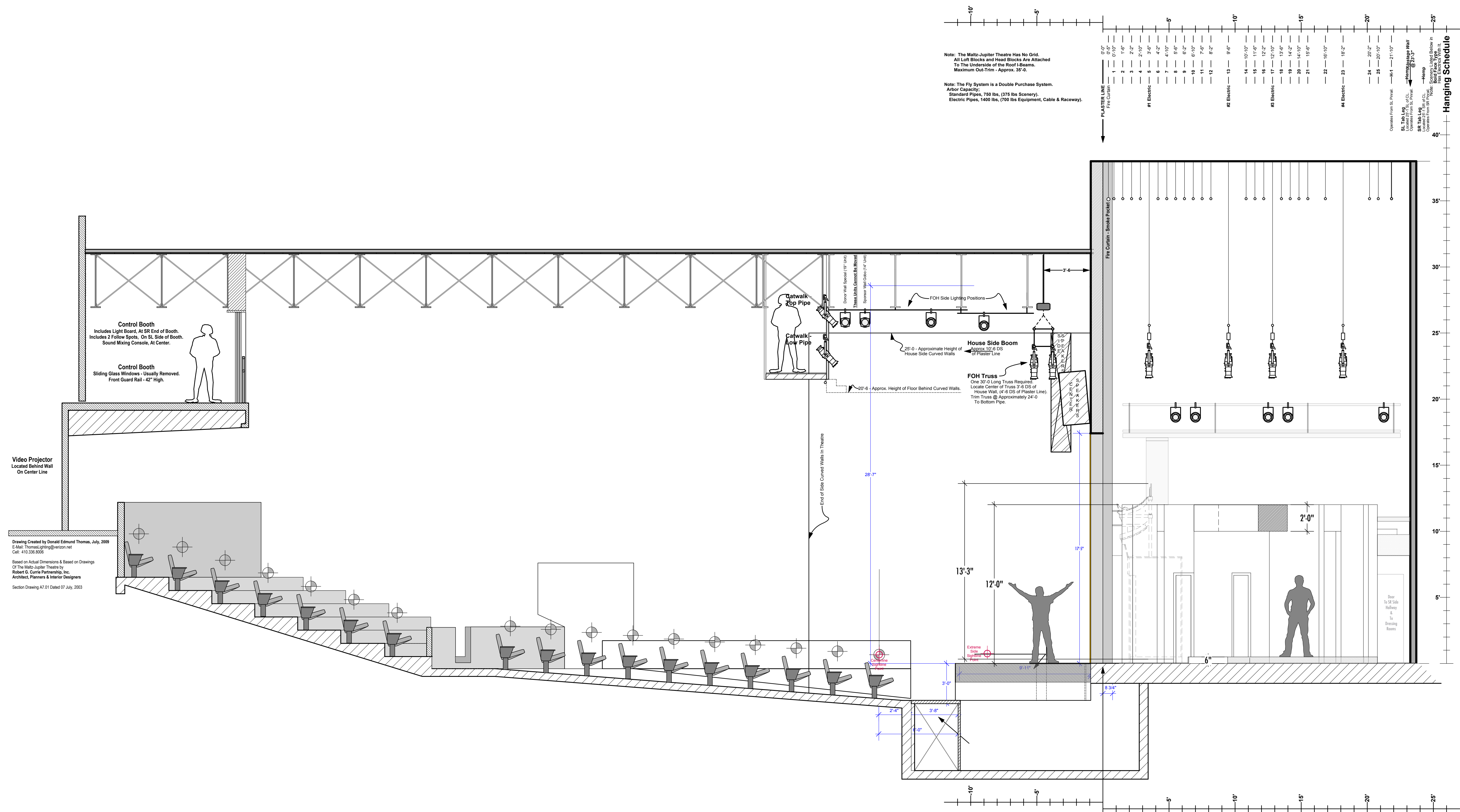
REVISION #3: 12.12.14

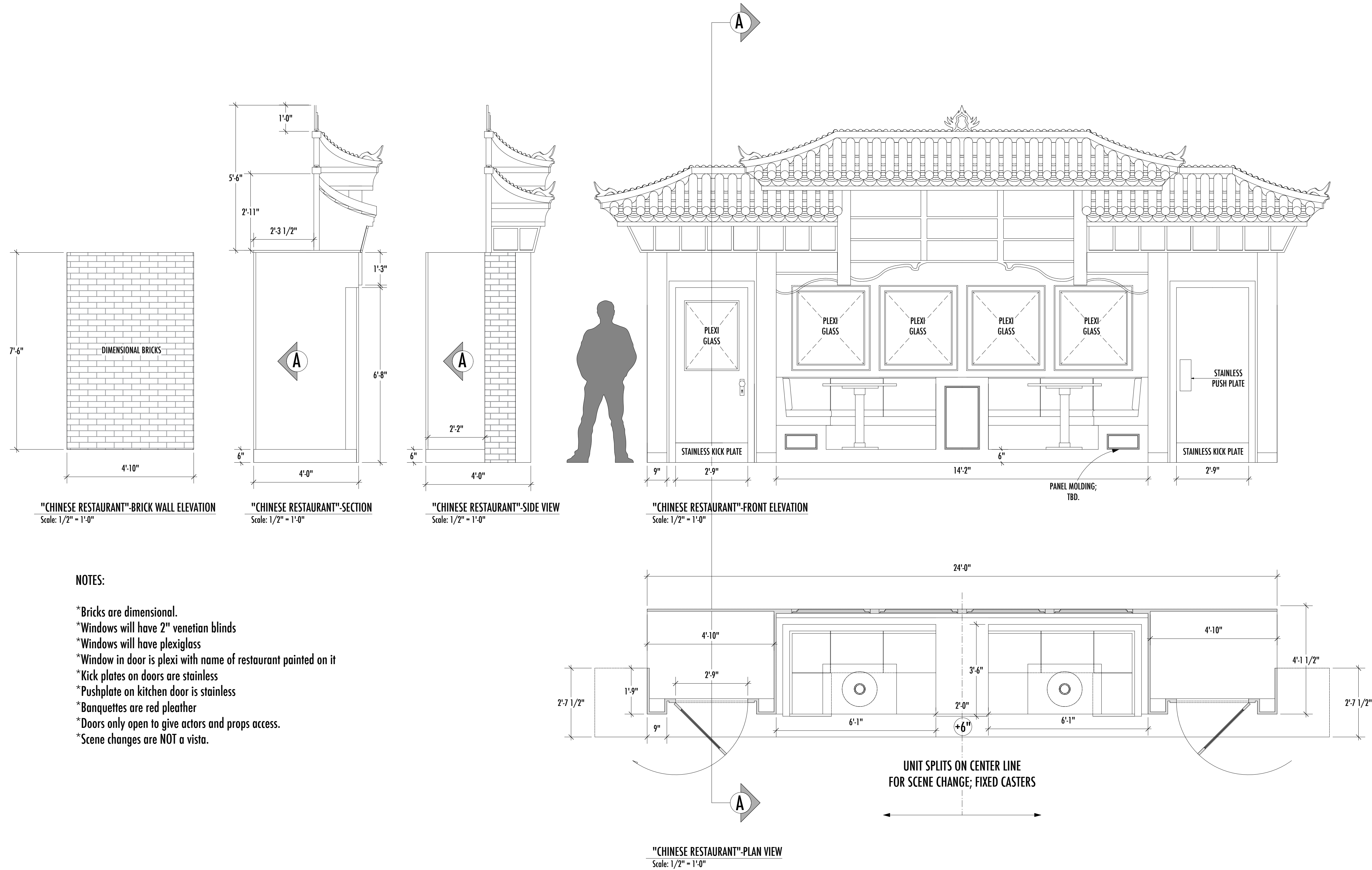
## CL SECTION RESTAURANT

PLATE NO.

# 3

DF 14





NOTES:

- \*Bricks are dimensional.
- \*Windows will have 2" venetian blinds
- \*Windows will have plexiglass
- \*Window in door is plexi with name of restaurant painted on it
- \*Kick plates on doors are stainless
- \*Pushplate on kitchen door is stainless
- \*Banquettes are red pleather
- \*Doors only open to give actors and props access.
- \*Scene changes are NOT a vista.



ANNE MUNDELL

412.260.4521  
AMUNDELL@ANDREW.CMU.EDU  
WWW.ANNEMUNDELL.COM

THE MALTZ JUPITER THEATRE PRESENTS  
**GLENGARRY GLEN ROSS**

WRITTEN BY: DAVID MAMET

DIRECTED BY: J BARRY LEWIS

PRODUCTION TEAM

SCENIC DESIGNER  
**ANNE MUNDELL**  
ASSOCIATE SCENIC DESIGNER  
**JOEY SARNO**

The designer is responsible for the visual aspects of the production only, and the specification of the designer's designs relate solely to the appearance of the design and not to matters of safety. The designer agrees to make prompt correcting alterations to any specifications found to be incompatible with proper safety precautions

THE MALTZ JUPITER THEATRE

DATE: 12-01-2014

SCALE: 1/2" = 1'-0"

DRAWN BY: JMS

REVISIONS:

REVISION #1: 12.02.14

REVISION #2: 12.07.14

REVISION #3: 12.12.14

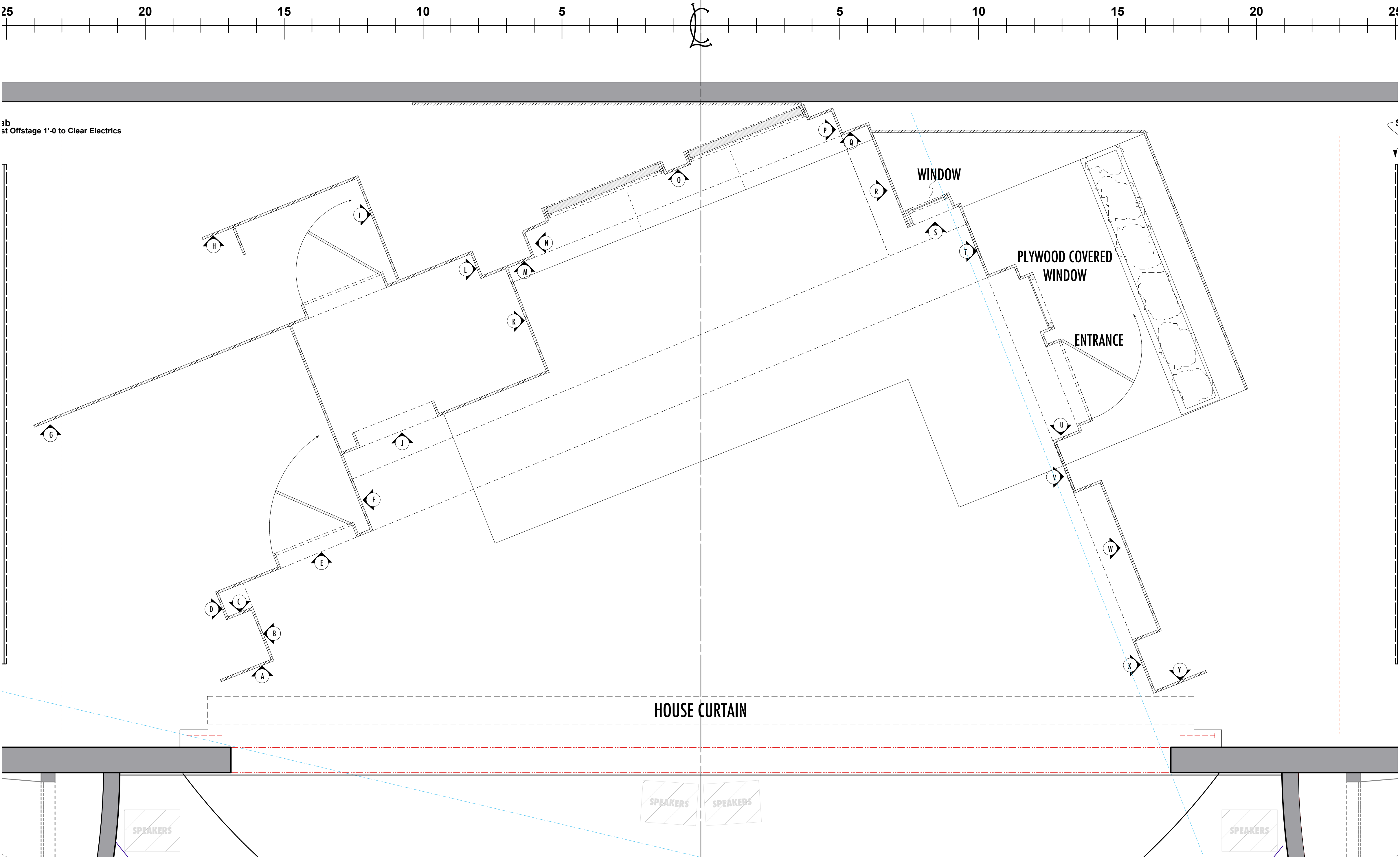
ELEVATIONS-RESTAURANT

PLATE NO.

4

OF 14





**ANNE MUNDELL**

412.260.4521  
AMUNDELL@ANDREW.CMU.EDU  
WWW.ANNEMUNDELL.COM

**GLENGARRY GLEN ROSS**

THE MALTZ JUPITER THEATRE PRESENTS

WRITTEN BY: DAVID MAMET

DIRECTED BY: J BARRY LEWIS

**PRODUCTION TEAM**

SCENIC DESIGNER  
**ANNE MUNDELL**  
ASSOCIATE SCENIC DESIGNER  
**JOEY SARNO**

The designer is responsible for the visual aspects of the production only, and the specification of the designer's designs relate solely to the appearance of the design and not to matters of safety. The designer agrees to make prompt correcting alterations to any specifications found to be incompatible with proper safety precautions

THE MALTZ JUPITER THEATRE

DATE: 12-01-2014

SCALE: 1/2" = 1'-0"

DRAWN BY: JMS

REVISIONS:

REVISION #1: 12.02.14

REVISION #2: 12.07.14

REVISION #3: 12.12.14

**WALL LAYOUT-OFFICES**

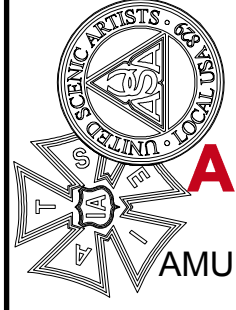
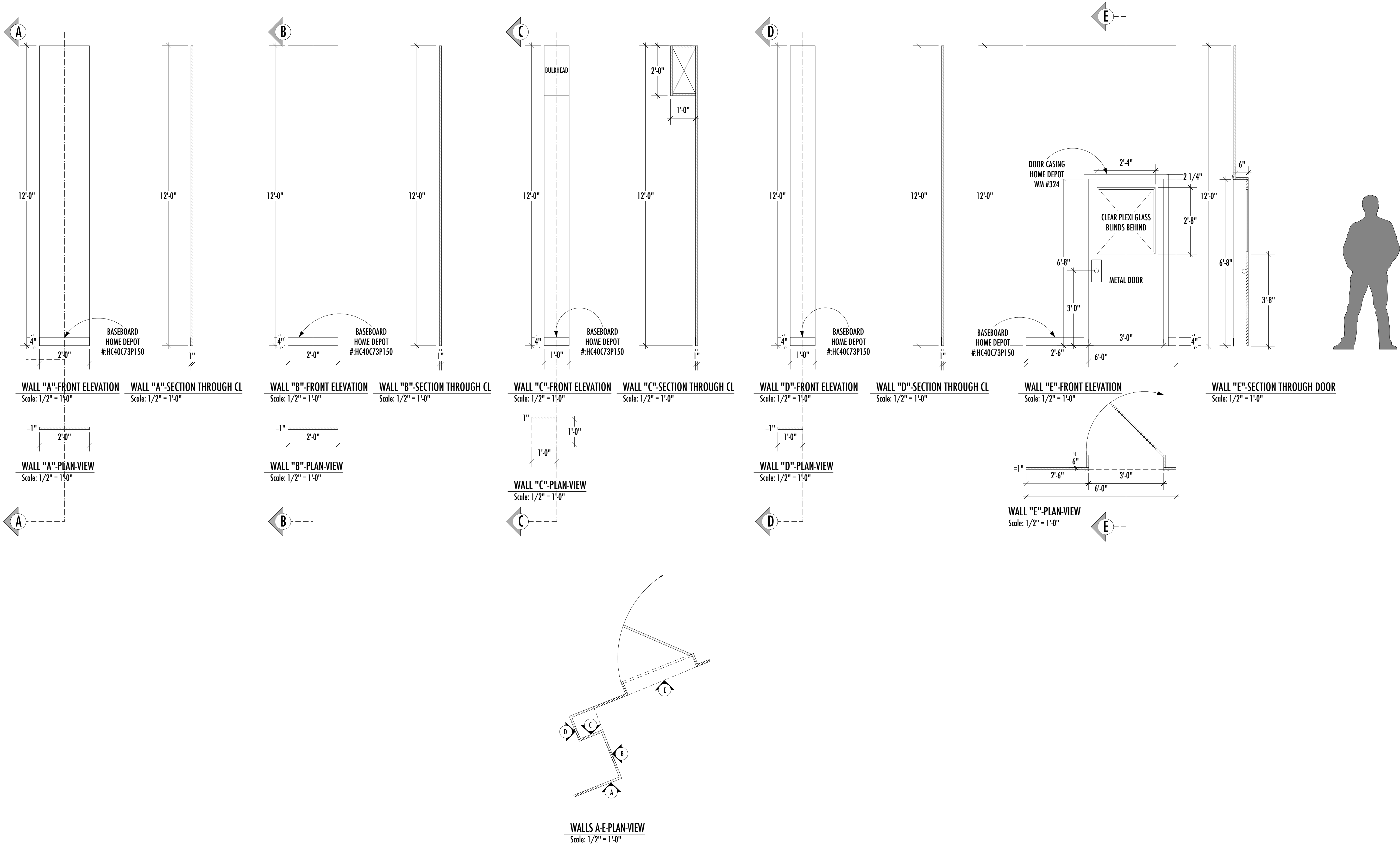
PLATE NO.

**5**

OF 14

NOTES:

\*WALLS HAVE PLASTERWORK/DRYWALL TREATMENT.



ANNE MUNDELL

412.260.4521  
AMUNDELL@ANDREW.CMU.EDU  
WWW.ANNEMUNDELL.COM

GLENGARRY GLEN ROSS

THE MALTZ JUPITER THEATRE PRESENTS

WRITTEN BY: DAVID MAMET

DIRECTED BY: J BARRY LEWIS

PRODUCTION TEAM

SCENIC DESIGNER  
ANNE MUNDELL  
ASSOCIATE SCENIC DESIGNER  
JOEY SARNO

The designer is responsible for the visual aspects of the production only, and the specification of the designer's designs relate solely to the appearance of the design and not to matters of safety. The designer agrees to make prompt correcting alterations to any specifications found to be incompatible with proper safety precautions

THE MALTZ JUPITER THEATRE

DATE: 12-01-2014

SCALE: 1/2" = 1'-0"

DRAWN BY: JMS

REVISIONS:

REVISION #1: 12.02.14

REVISION #2: 12.07.14

REVISION #3: 12.12.14

ELEVATIONS-OFFICES

PLATE NO.

6

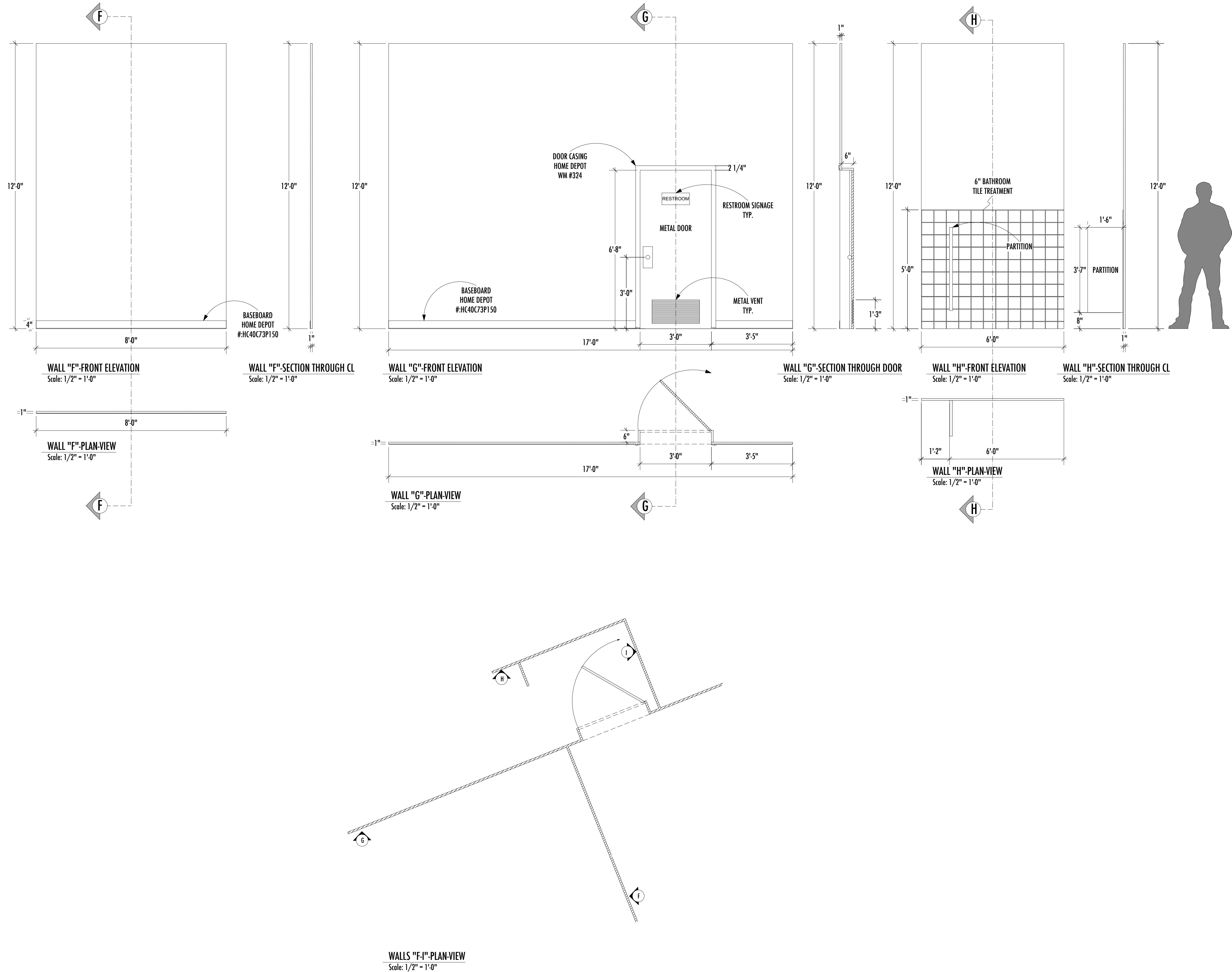
OF 14



NOTES:

\*WALLS HAVE PLASTERWORK/DRYWALL TREATMENT.

VECTORWORKS EDUCATIONAL VERSION



**ANNE MUNDELL**  
412.260.4521  
AMUNDELL@ANDREW.CMU.EDU  
WWW.ANNEMUNDELL.COM

THE MALTZ JUPITER THEATRE PRESENTS  
**GLENGARRY GLEN ROSS**  
WRITTEN BY: DAVID MAMET  
DIRECTED BY: J BARRY LEWIS

PRODUCTION TEAM

SCENIC DESIGNER  
**ANNE MUNDELL**  
ASSOCIATE SCENIC DESIGNER  
**JOEY SARNO**

The designer is responsible for the visual aspects of the production only, and the specification of the designer's designs relate solely to the appearance of the design and not to matters of safety. The designer agrees to make prompt correcting alterations to any specifications found to be incompatible with proper safety precautions

THE MALTZ JUPITER THEATRE

DATE: 12-01-2014

SCALE: 1/2" = 1'-0"

DRAWN BY: JMS

REVISIONS:

REVISION #1: 12.02.14

REVISION #2: 12.07.14

REVISION #3: 12.12.14

ELEVATIONS-OFFICES

PLATE NO.

7

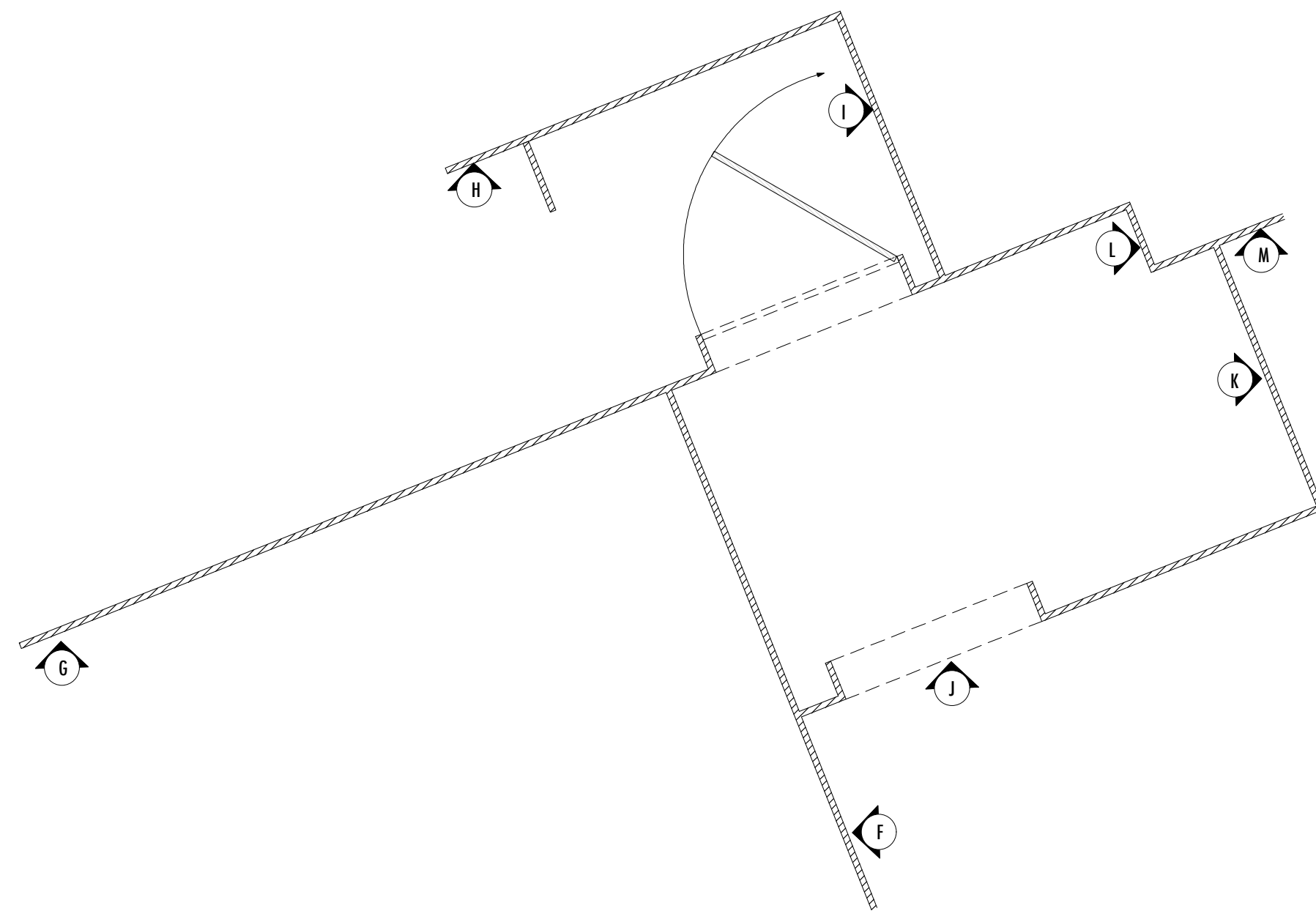
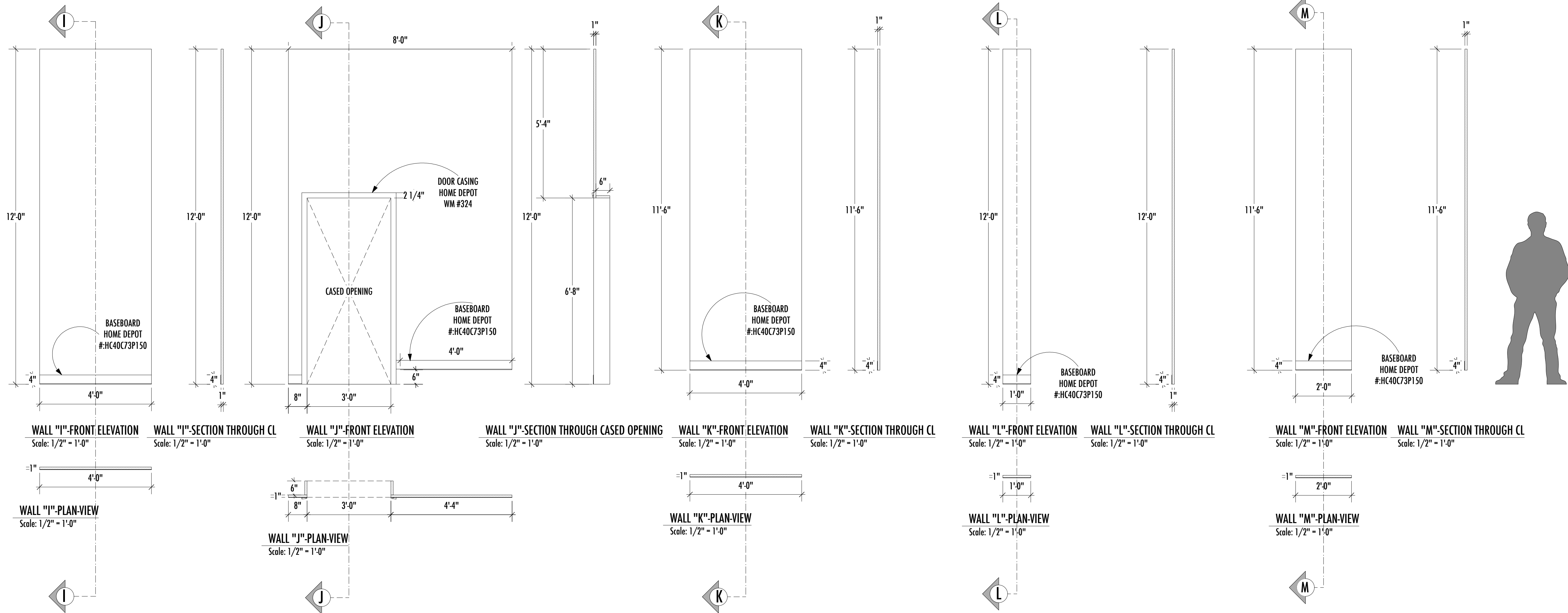
OF 14

VECTORWORKS EDUCATIONAL VERSION

NOTES:

\*WALLS HAVE PLASTERWORK/DRYWALL TREATMENT.

VECTORWORKS EDUCATIONAL VERSION



WALLS "G-M"-PLAN-VIEW  
Scale: 1/2" = 1'-0"

VECTORWORKS EDUCATIONAL VERSION



ANNE MUNDELL

412.260.4521  
AMUNDELL@ANDREW.CMU.EDU  
WWW.ANNEMUNDELL.COM

THE MALTZ JUPITER THEATRE PRESENTS  
**GLENGARRY GLEN ROSS**

WRITTEN BY: DAVID MAMET

DIRECTED BY: J BARRY LEWIS

PRODUCTION TEAM

SCENIC DESIGNER  
**ANNE MUNDELL**  
ASSOCIATE SCENIC DESIGNER  
**JOEY SARNO**

The designer is responsible for the visual aspects of the production only, and the specification of the designer's designs relate solely to the appearance of the design and not to matters of safety. The designer agrees to make prompt correcting alterations to any specifications found to be incompatible with proper safety precautions

THE MALTZ JUPITER THEATRE

DATE: 12-01-2014

SCALE: 1/2" = 1'-0"

DRAWN BY: JMS

REVISIONS:

REVISION #1: 12.02.14

REVISION #2: 12.07.14

REVISION #3: 12.12.14

ELEVATIONS-OFFICES

PLATE NO.

8

OF 14



NOTES:

\*WALLS HAVE PLASTERWORK/DRYWALL TREATMENT.



ANNE MUNDELL  
412.260.4521  
AMUNDELL@ANDREW.CMU.EDU  
WWW.ANNEMUNDELL.COM

THE MALTZ JUPITER THEATRE PRESENTS  
**GLENGARRY GLEN ROSS**

WRITTEN BY: DAVID MAMET  
DIRECTED BY: J BARRY LEWIS

PRODUCTION TEAM

SCENIC DESIGNER  
ANNE MUNDELL  
ASSOCIATE SCENIC DESIGNER  
JOEY SARNO

The designer is responsible for the visual aspects of the production only, and the specification of the designer's designs relate solely to the appearance of the design and not to matters of safety. The designer agrees to make prompt correcting alterations to any specifications found to be incompatible with proper safety precautions

THE MALTZ JUPITER THEATRE

DATE: 12-01-2014

SCALE: 1/2" = 1'-0"

DRAWN BY: JMS

REVISIONS:

REVISION #1: 12.02.14

REVISION #2: 12.07.14

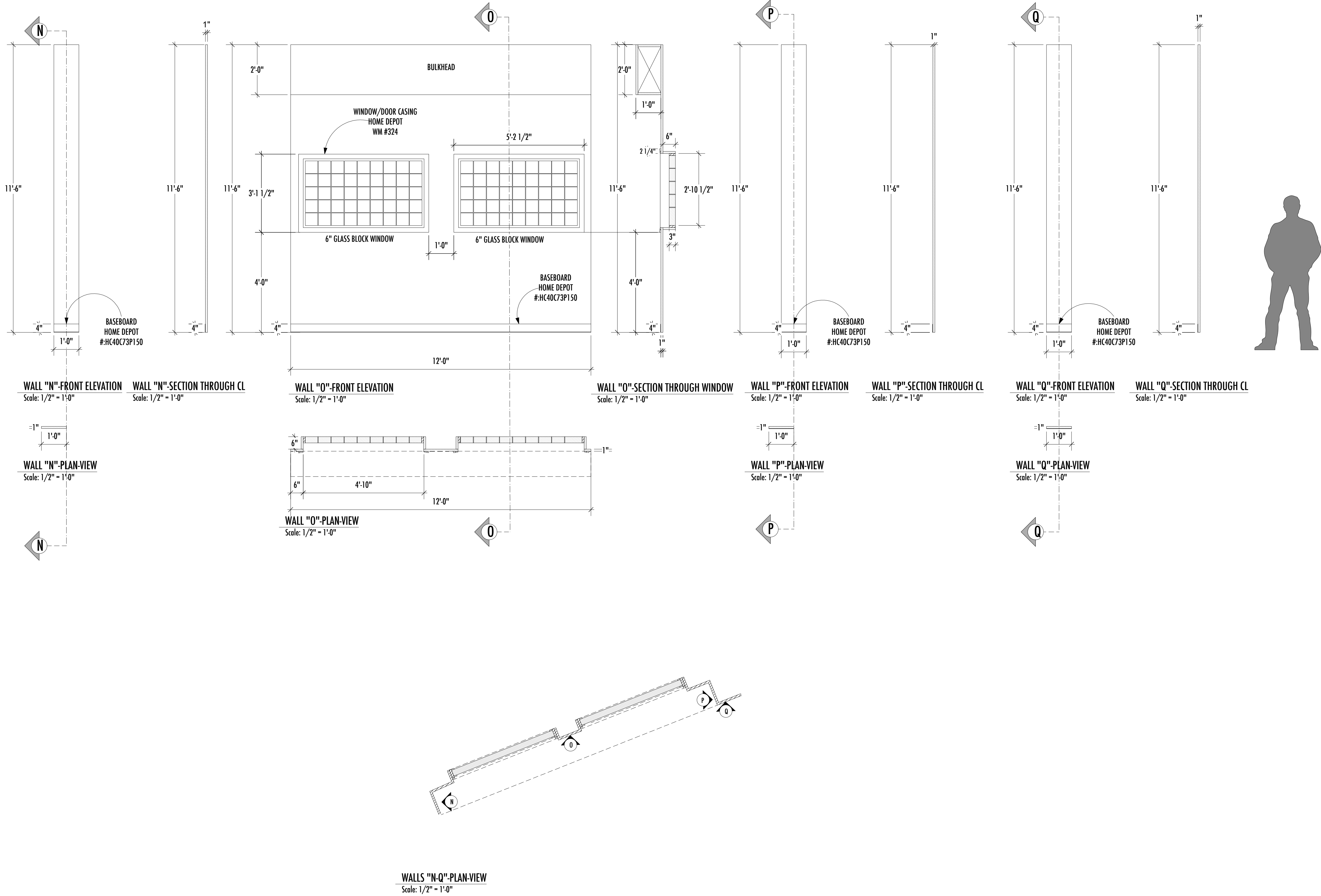
REVISION #3: 12.12.14

ELEVATIONS-OFFICES

PLATE NO.

9

OF 14

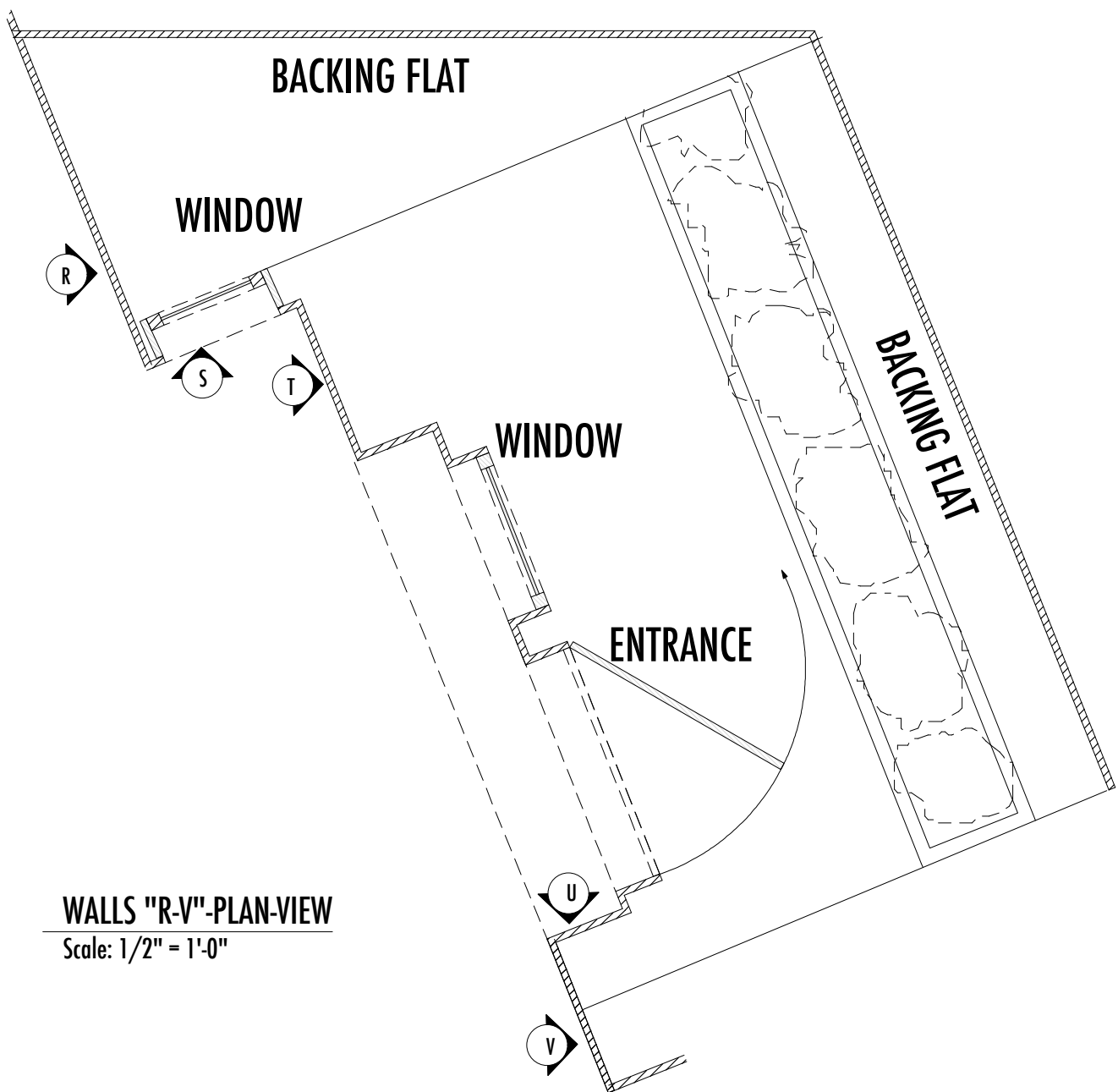
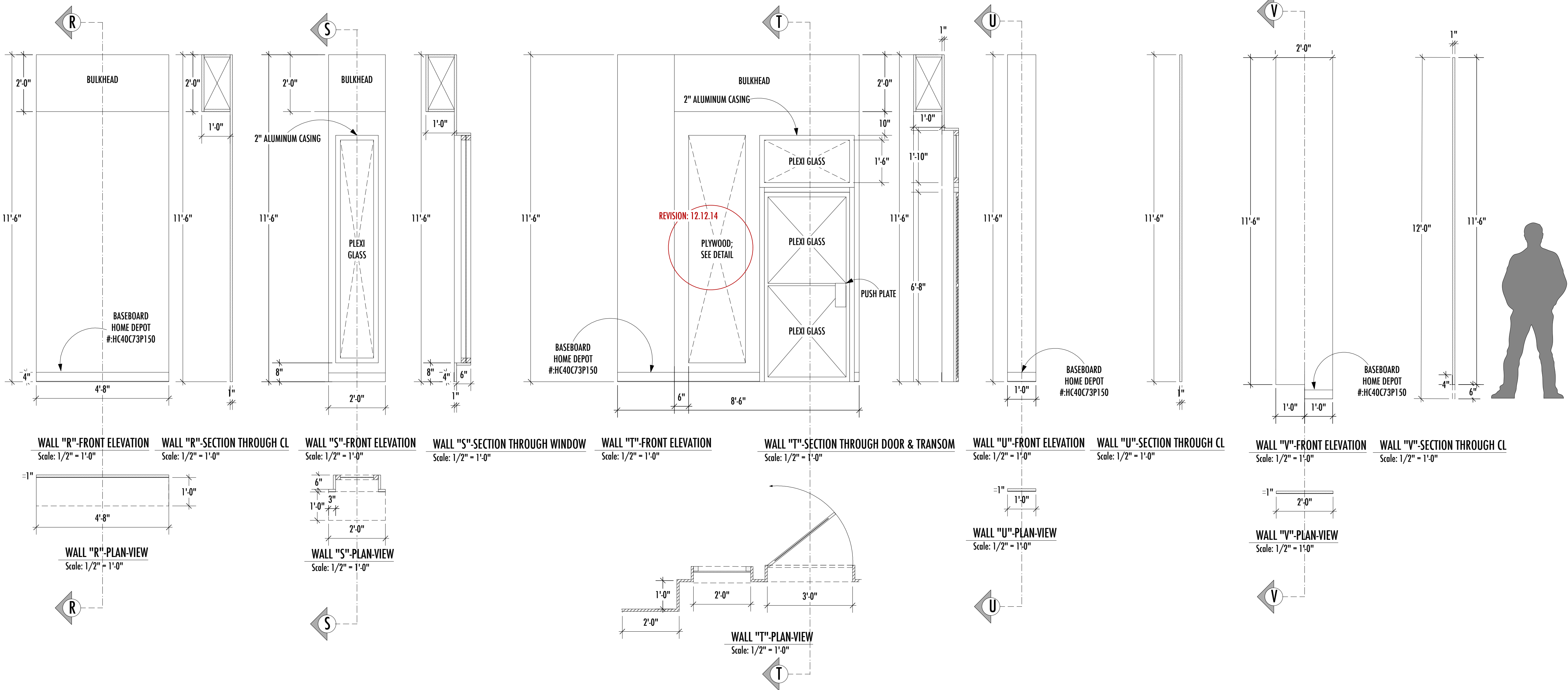




NOTES:

\*WALLS HAVE PLASTERWORK/DRYWALL TREATMENT.

VECTORWORKS EDUCATIONAL VERSION



VECTORWORKS EDUCATIONAL VERSION



THE MALTZ JUPITER THEATRE PRESENTS  
**GLENGARRY GLEN ROSS**

WRITTEN BY: DAVID MAMET  
DIRECTED BY: J BARRY LEWIS

PRODUCTION TEAM

SCENIC DESIGNER  
**ANNE MUNDELL**  
ASSOCIATE SCENIC DESIGNER  
**JOEY SARNO**

The designer is responsible for the visual aspects of the production only, and the specification of the designer's designs relate solely to the appearance of the design and not to matters of safety. The designer agrees to make prompt correcting alterations to any specifications found to be incompatible with proper safety precautions

THE MALTZ JUPITER THEATRE

DATE: 12-01-2014

SCALE: 1/2" = 1'-0"

DRAWN BY: JMS

REVISIONS:

REVISION #1: 12.02.14

REVISION #2: 12.07.14

REVISION #3: 12.12.14

ELEVATIONS-OFFICES

PLATE NO.

10

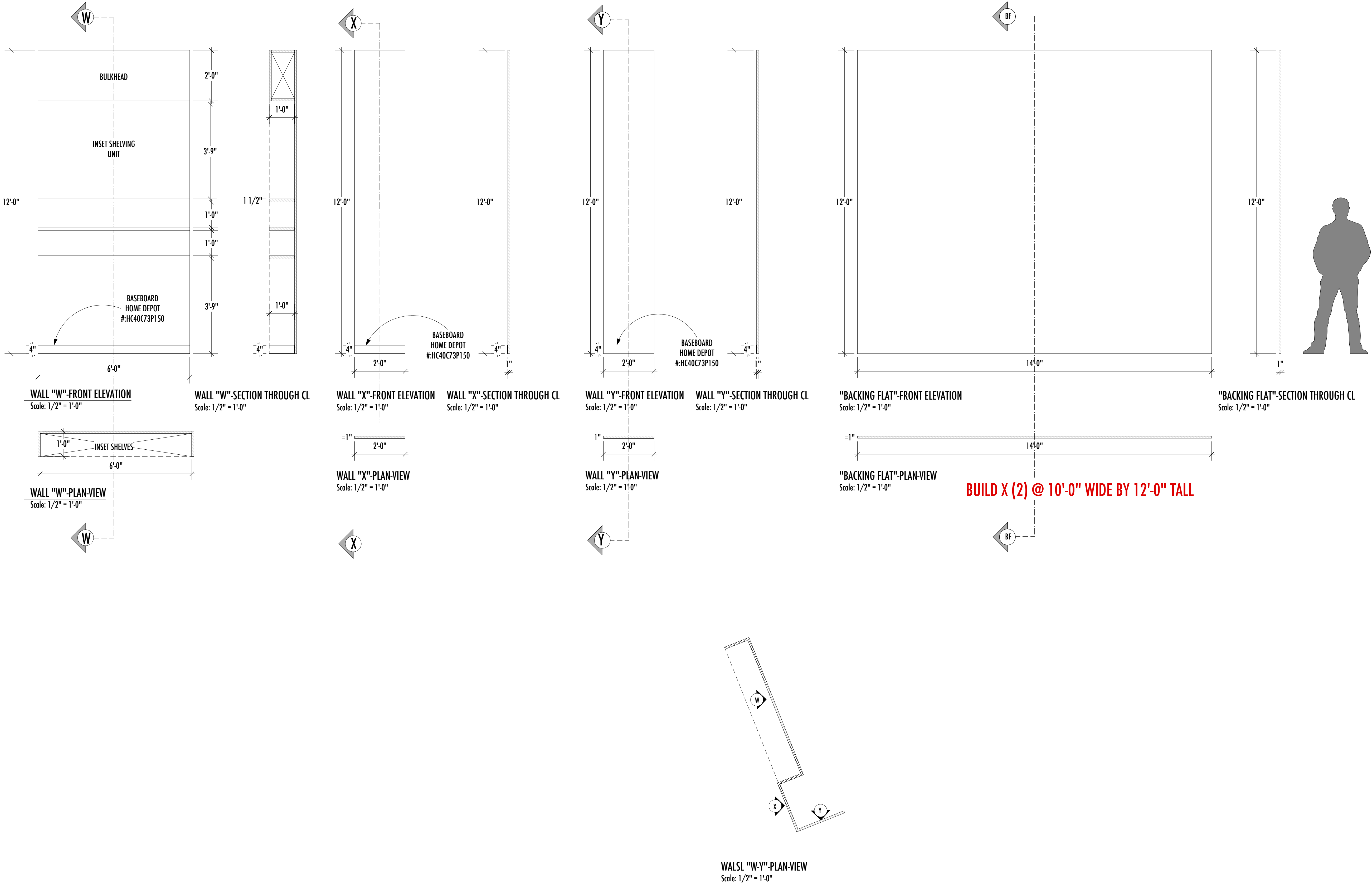
OF 14



NOTES:

\*WALLS HAVE PLASTERWORK/DRYWALL TREATMENT.

\*MASKING WALLS; TREATMENT TBD.



**ANNE MUNDELL**  
412.260.4521  
AMUNDELL@ANDREW.CMU.EDU  
WWW.ANNEMUNDELL.COM

THE MALTZ JUPITER THEATRE PRESENTS  
**GLENGARRY GLEN ROSS**

WRITTEN BY: DAVID MAMET  
DIRECTED BY: J BARRY LEWIS

PRODUCTION TEAM

SCENIC DESIGNER  
**ANNE MUNDELL**  
ASSOCIATE SCENIC DESIGNER  
**JOEY SARNO**

The designer is responsible for the visual aspects of the production only, and the specification of the designer's designs relate solely to the appearance of the design and not to matters of safety. The designer agrees to make prompt correcting alterations to any specifications found to be incompatible with proper safety precautions

THE MALTZ JUPITER THEATRE

DATE: 12-01-2014

SCALE: 1/2" = 1'-0"

DRAWN BY: JMS

REVISIONS:

REVISION #1: 12.02.14

REVISION #2: 12.07.14

REVISION #3: 12.12.14

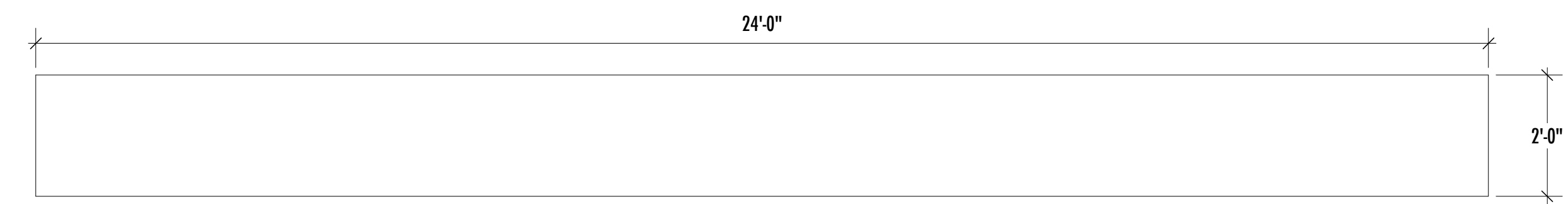
ELEVATIONS-OFFICES

PLATE NO.

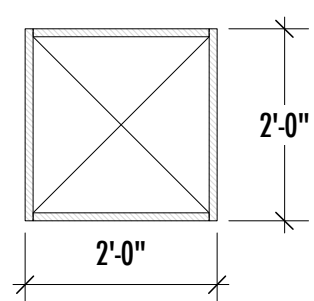
**11**

OF 14

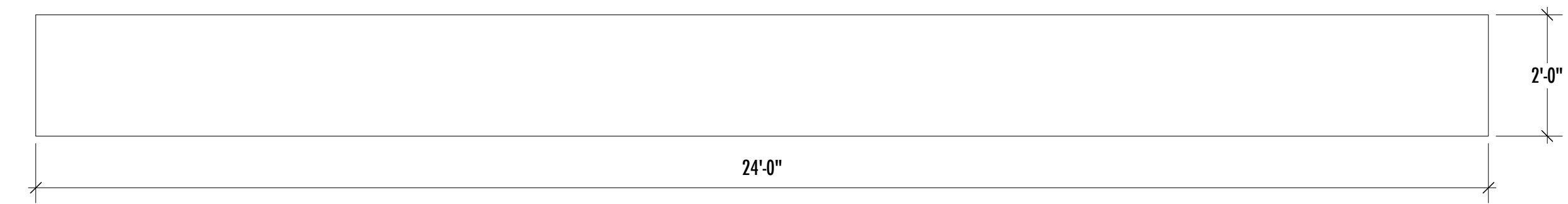




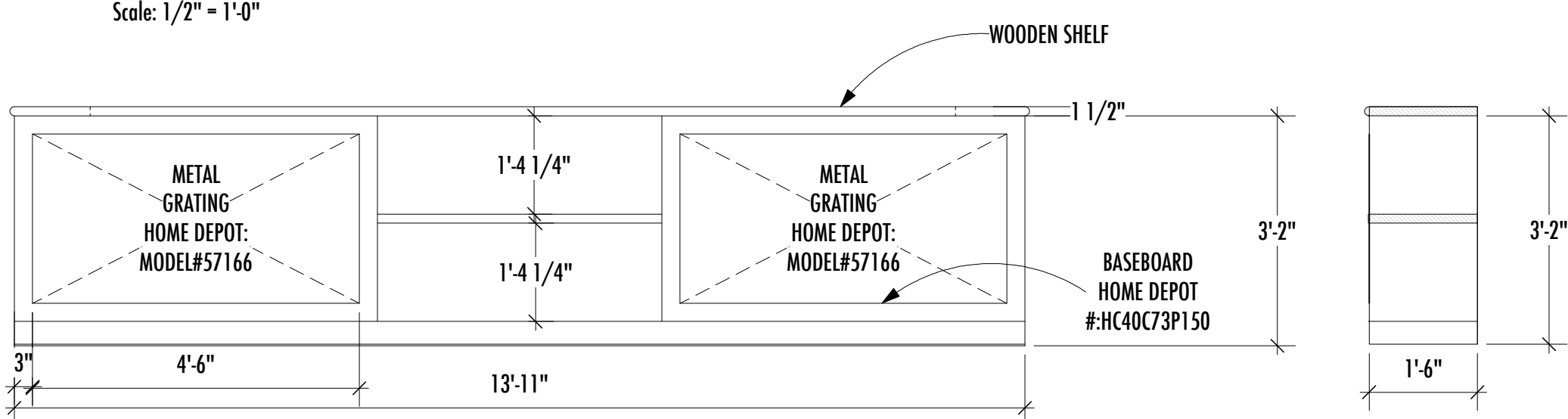
"OFFICE HEADER"-FRONT ELEVATION  
Scale: 1/2" = 1'-0"



"OFFICE HEADER"-SECTION  
Scale: 1/2" = 1'-0"

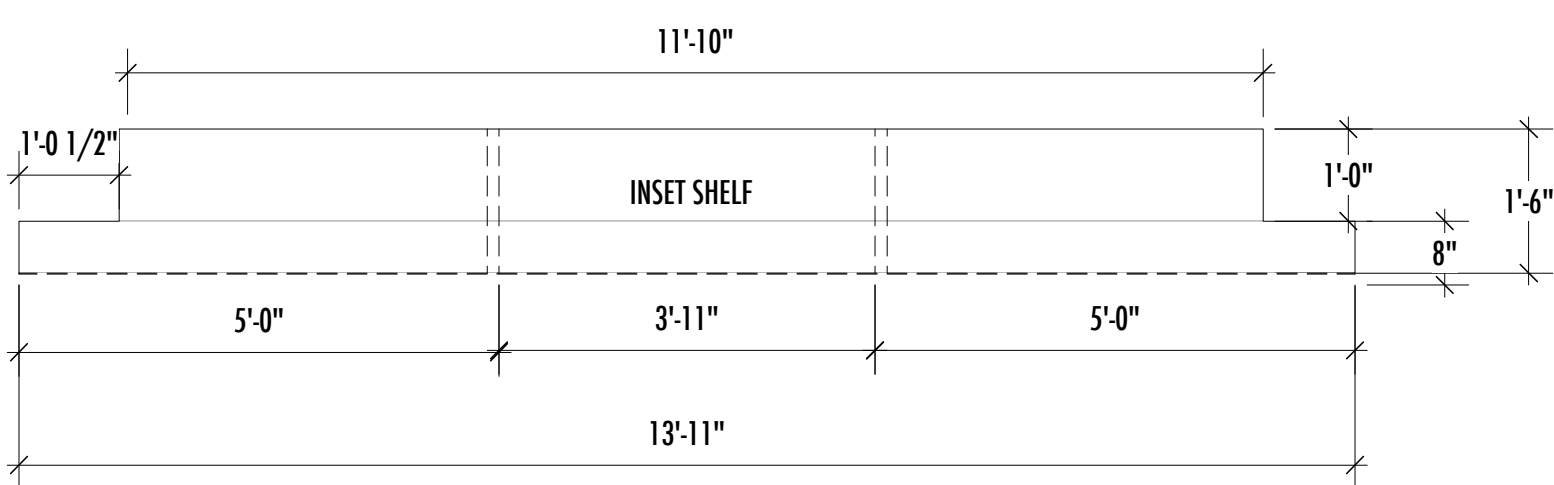


"OFFICE HEADER"-PLAN VIEW  
Scale: 1/2" = 1'-0"

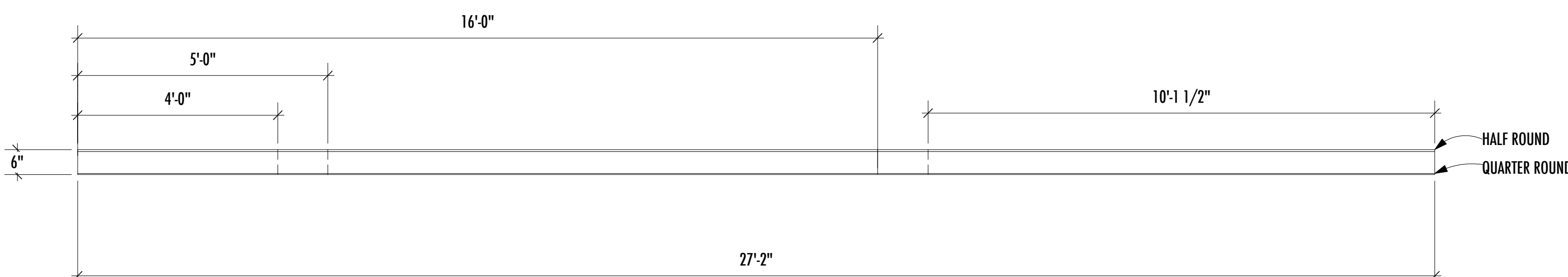


"RADIATOR COVER"-FRONT ELEVATION  
Scale: 1/2" = 1'-0"

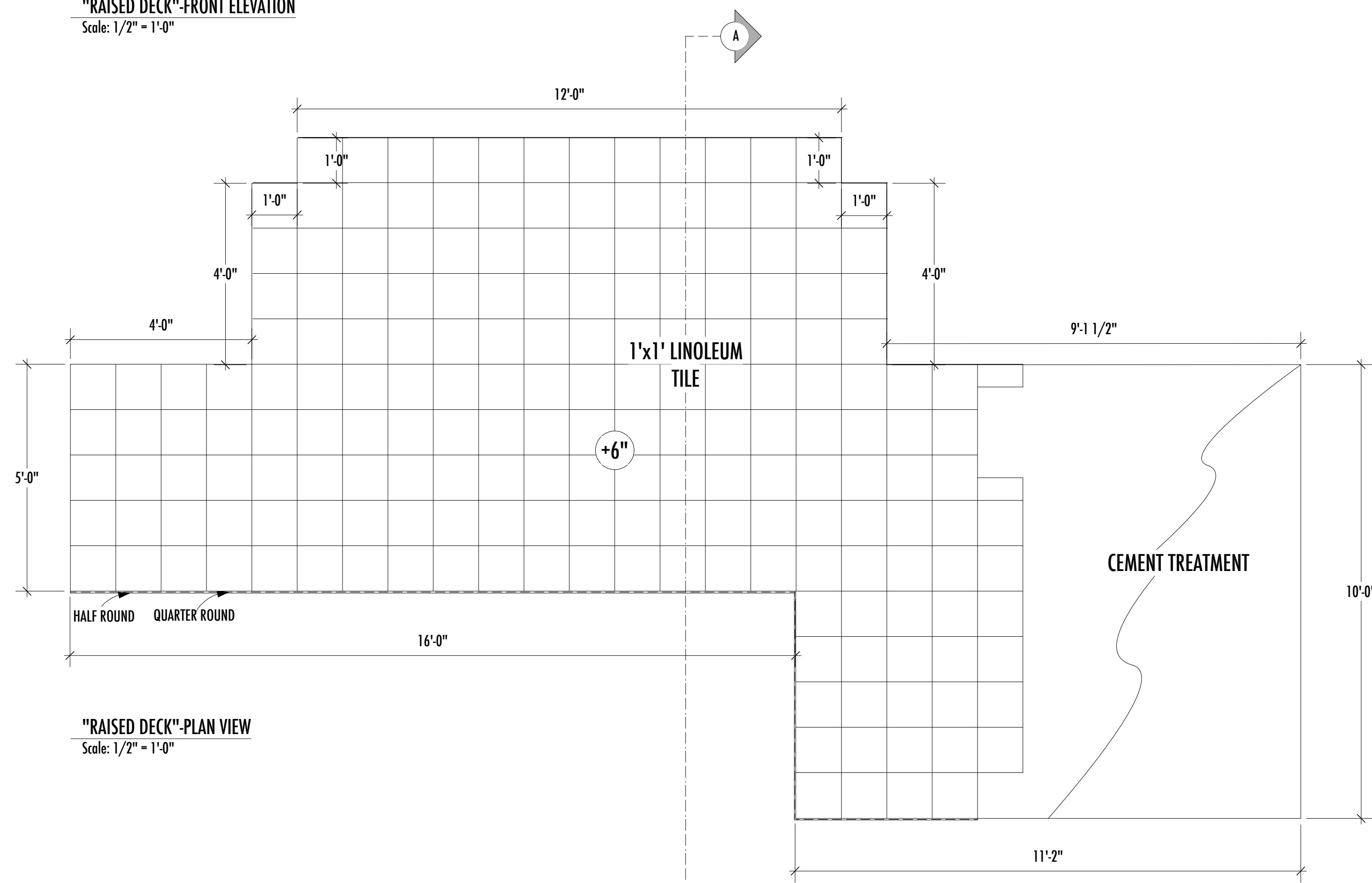
"RADIATOR COVER"-SECTION THROUGH CL  
Scale: 1/2" = 1'-0"



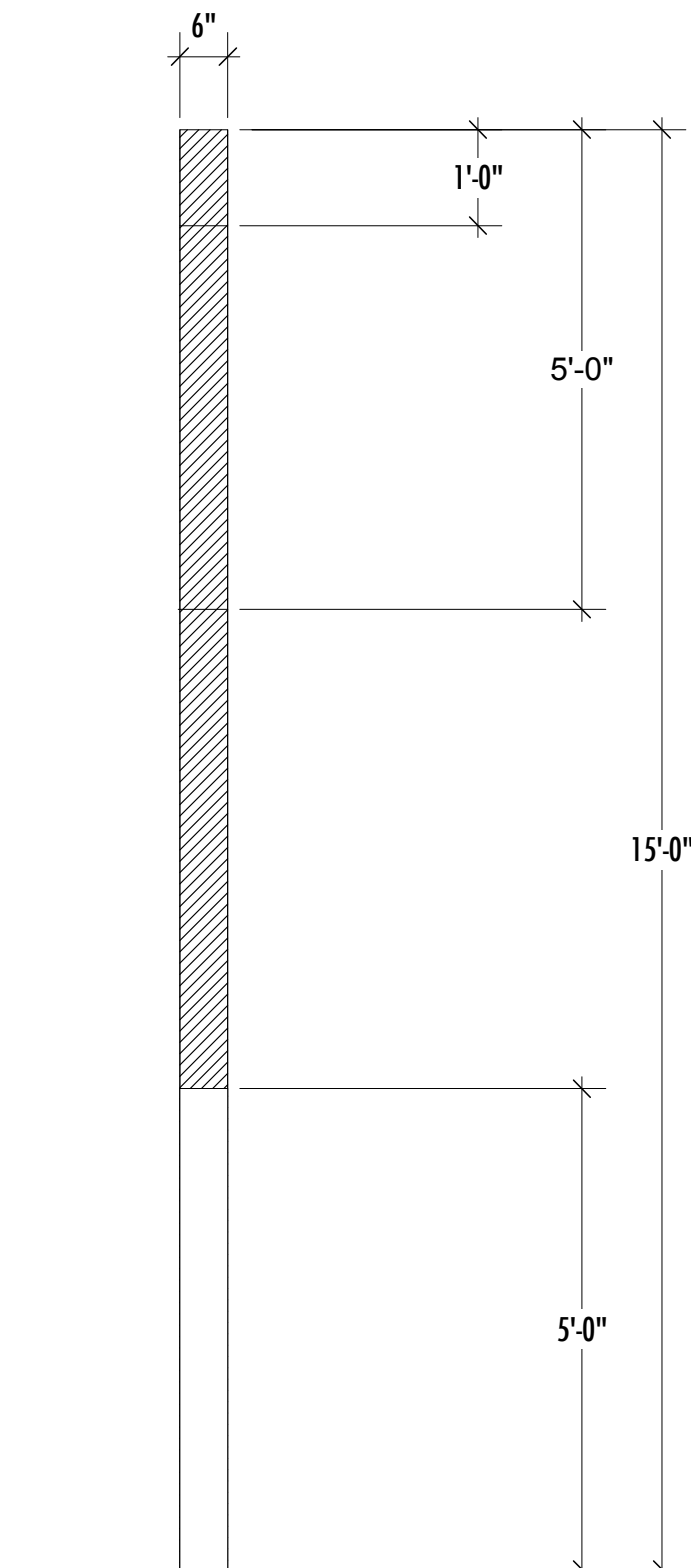
"RADIATOR COVER"-PLAN VIEW  
Scale: 1/2" = 1'-0"



"RAISED DECK"-FRONT ELEVATION  
Scale: 1/2" = 1'-0"



"RAISED DECK"-PLAN VIEW  
Scale: 1/2" = 1'-0"



"RAISED DECK"-SECTION A  
Scale: 1/2" = 1'-0"



**ANNE MUNDELL**  
412.260.4521  
AMUNDELL@ANDREW.CMU.EDU  
WWW.ANNEMUNDELL.COM

THE MALTZ JUPITER THEATRE PRESENTS  
**GLENGARRY GLEN ROSS**  
WRITTEN BY: DAVID MAMET  
DIRECTED BY: J BARRY LEWIS

**PRODUCTION TEAM**

SCENIC DESIGNER  
**ANNE MUNDELL**  
ASSOCIATE SCENIC DESIGNER  
**JOEY SARNO**

The designer is responsible for the visual aspects of the production only, and the specification of the designer's designs relate solely to the appearance of the design and not to matters of safety. The designer agrees to make prompt correcting alterations to any specifications found to be incompatible with proper safety precautions

**THE MALTZ JUPITER THEATRE**

**DATE:** 12-01-2014

**SCALE:** 1/2" = 1'-0"

**DRAWN BY:** JMS

**REVISIONS:**

**REVISION #1: 12.02.14**

**REVISION #2: 12.07.14**

**REVISION #3: 12.12.14**

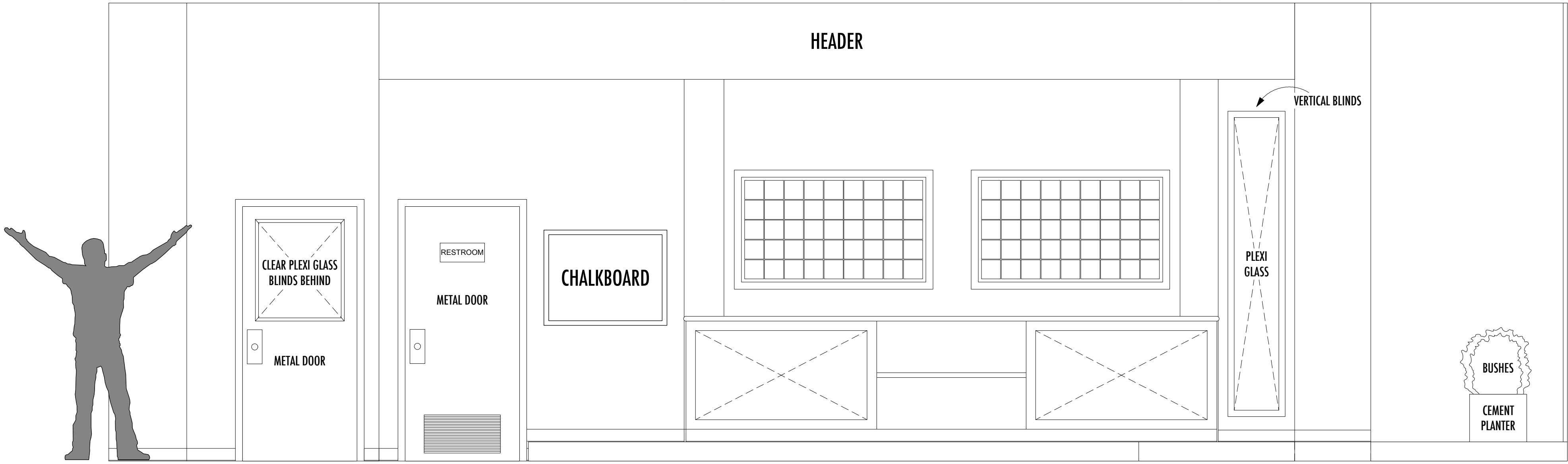
**ELEVATIONS-OFFICES**

PLATE NO.

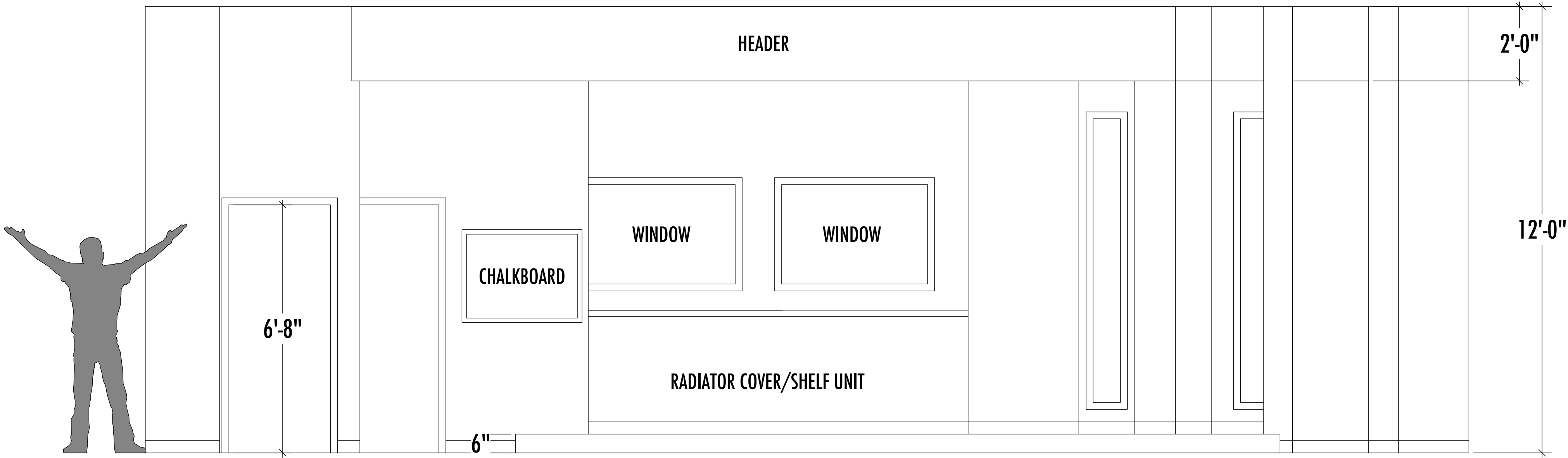
**12**

OF 14





"OFFICES-STRAIGHT ON"-FRONT ELEVATION  
Scale: 1/2" = 1'-0"



"OFFICES-AS SEEN IN SPACE"-FRONT ELEVATION  
Scale: 1/2" = 1'-0"



**ANNE MUNDELL**  
412.260.4521  
AMUNDELL@ANDREW.CMU.EDU  
WWW.ANNEMUNDELL.COM

THE MALTZ JUPITER THEATRE PRESENTS  
**GLENGARRY GLEN ROSS**

WRITTEN BY: DAVID MAMET  
DIRECTED BY: J BARRY LEWIS

**PRODUCTION TEAM**

SCENIC DESIGNER  
**ANNE MUNDELL**  
ASSOCIATE SCENIC DESIGNER  
**JOEY SARNO**

The designer is responsible for the visual aspects of the production only, and the specification of the designer's designs relate solely to the appearance of the design and not to matters of safety. The designer agrees to make prompt correcting alterations to any specifications found to be incompatible with proper safety precautions

THE MALTZ JUPITER THEATRE

DATE: 12-01-2014

SCALE: 1/2" = 1'-0"

DRAWN BY: JMS

REVISIONS:

REVISION #1: 12.02.14

REVISION #2: 12.07.14

REVISION #3: 12.12.14

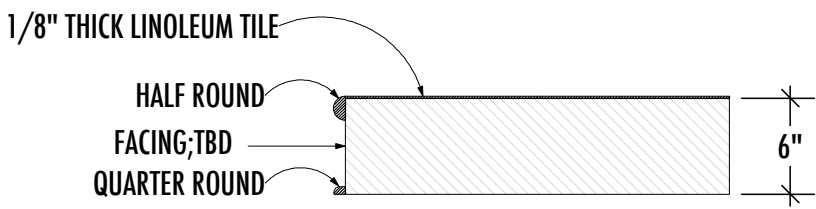
**FRONT ELEVATION-OFFICES**

PLATE NO.

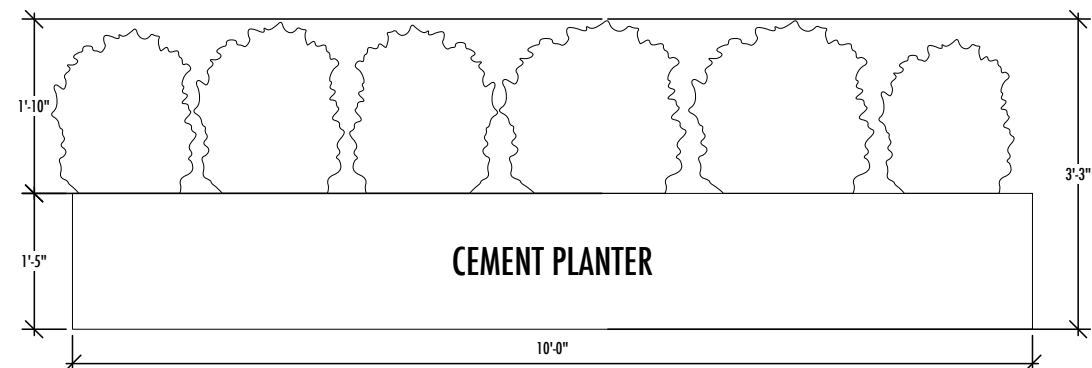
**13**

OF 14

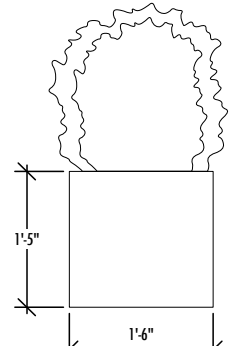




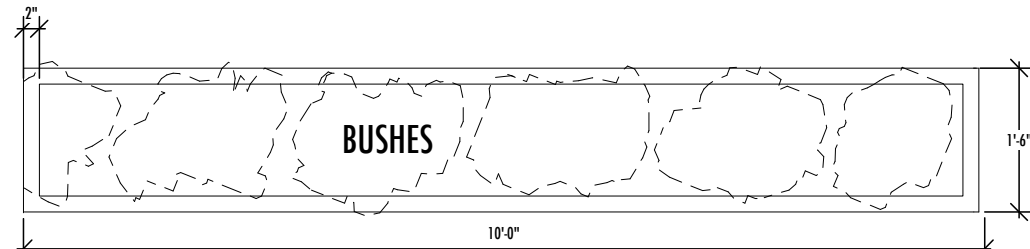
"PLATFORM FACING DETAIL"  
Scale: 1" = 1'-0"



"PLANTER"-FRONT ELEVATION  
Scale: 1/2" = 1'-0"



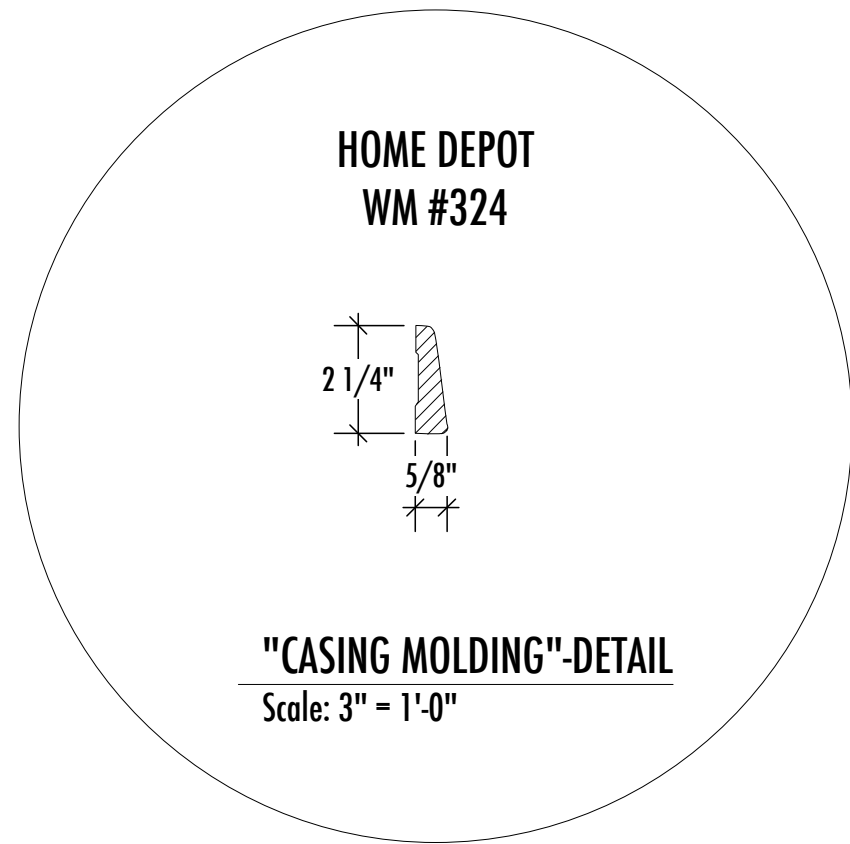
"PLANTER"-SIDE VIEW  
Scale: 1/2" = 1'-0"



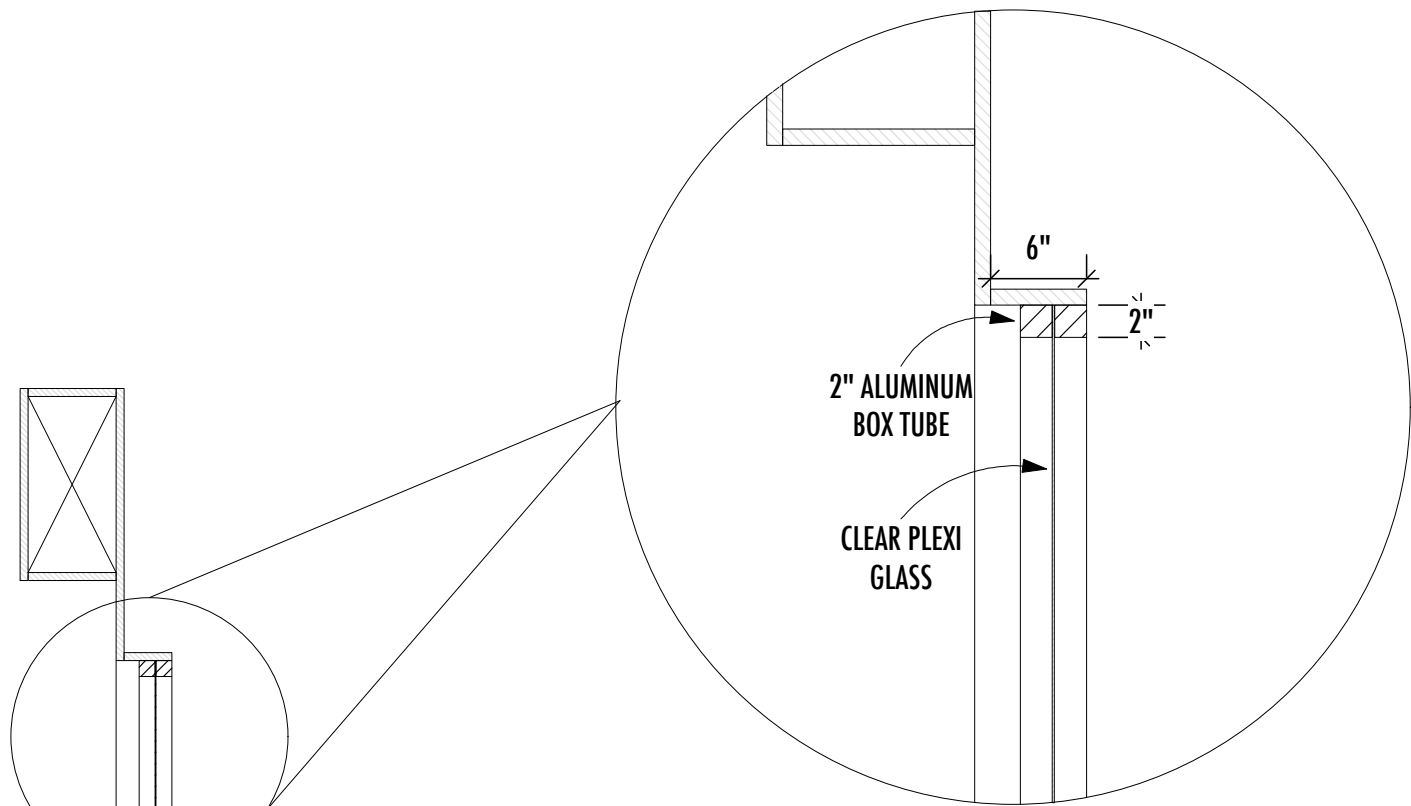
"PLANTER"-PLAN VIEW  
Scale: 1/2" = 1'-0"



"PLANTER"-REFERENCE IMAGE  
NOT-TO-SCALE

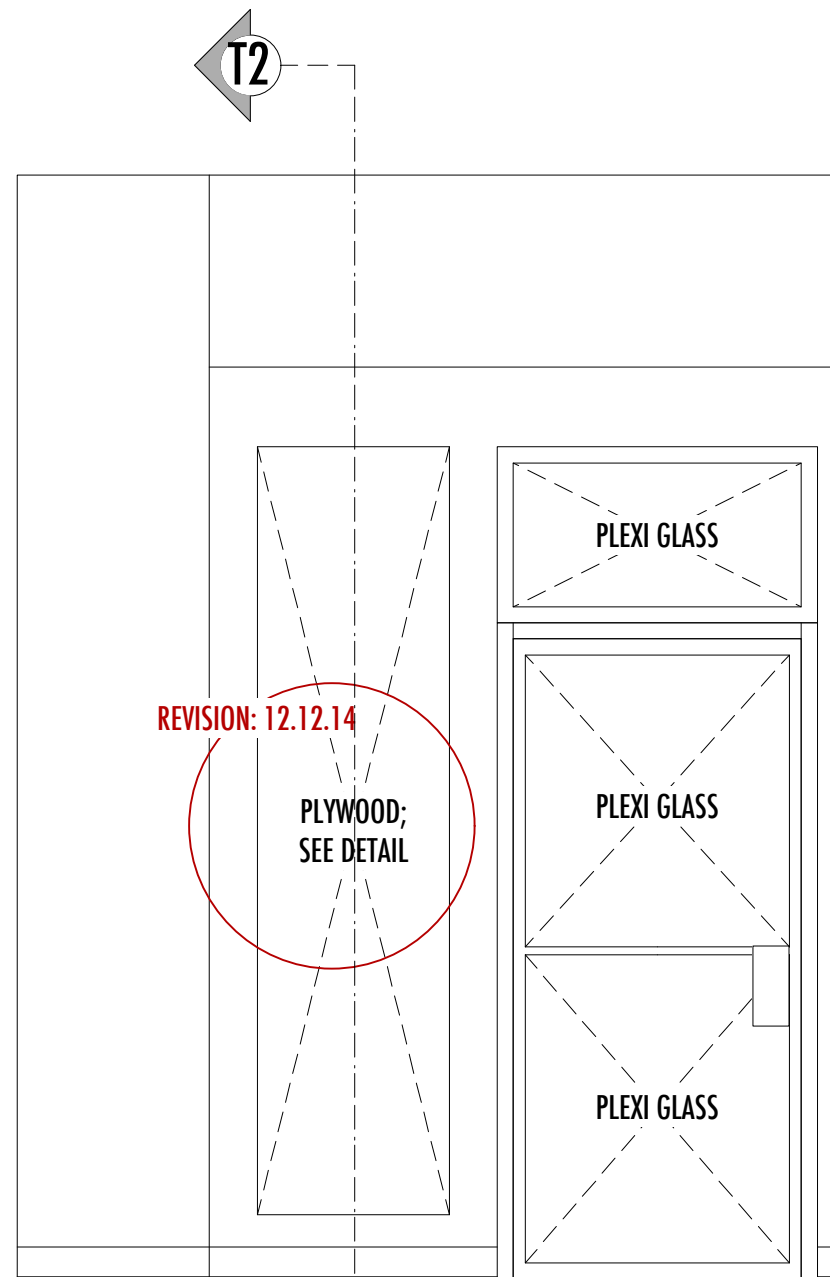


"CASING MOLDING"-DETAIL  
Scale: 3" = 1'-0"

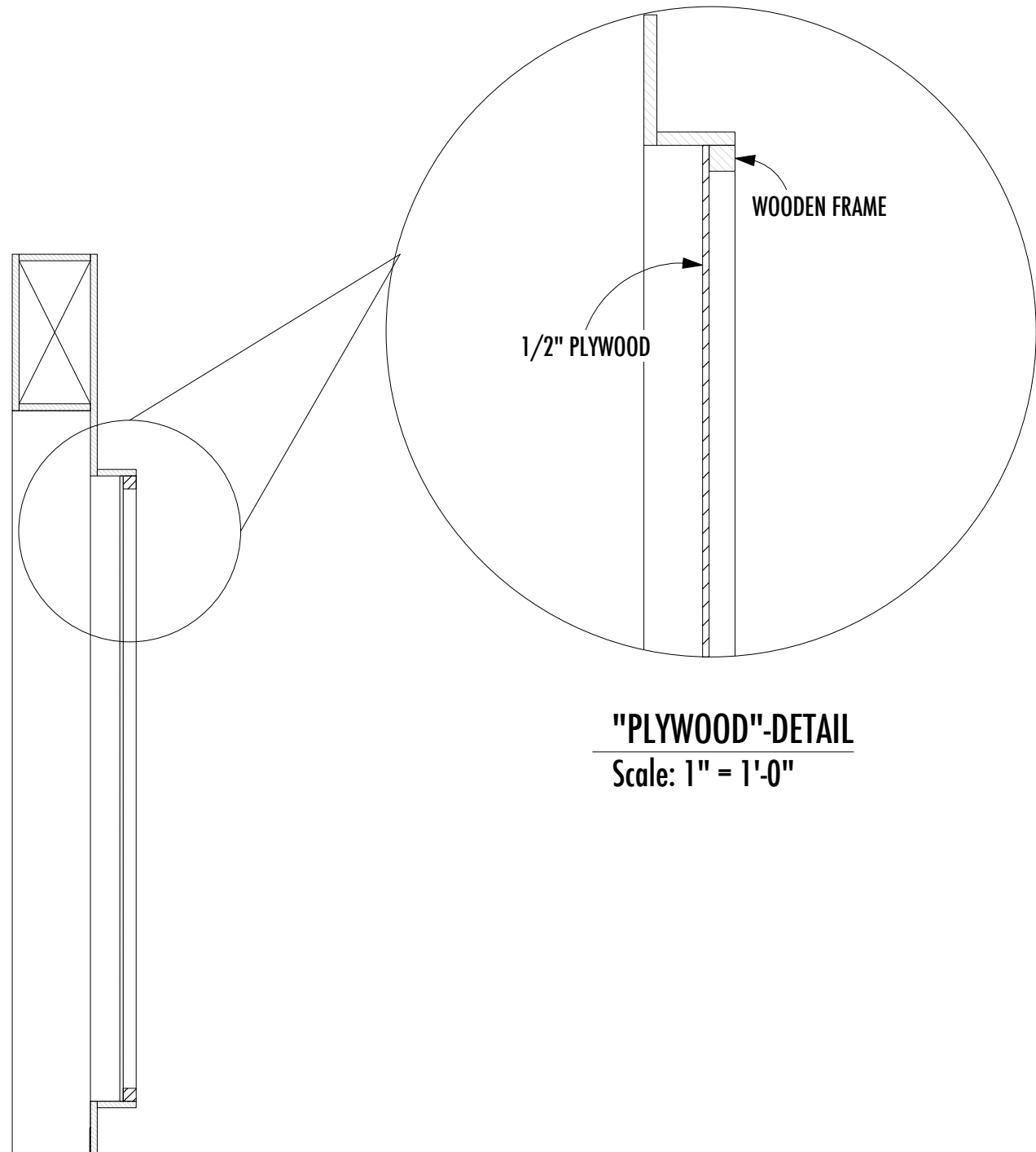


WALL "S"-CL-SECTION  
Scale: 1" = 1'-0"

VECTORWORKS EDUCATIONAL VERSION

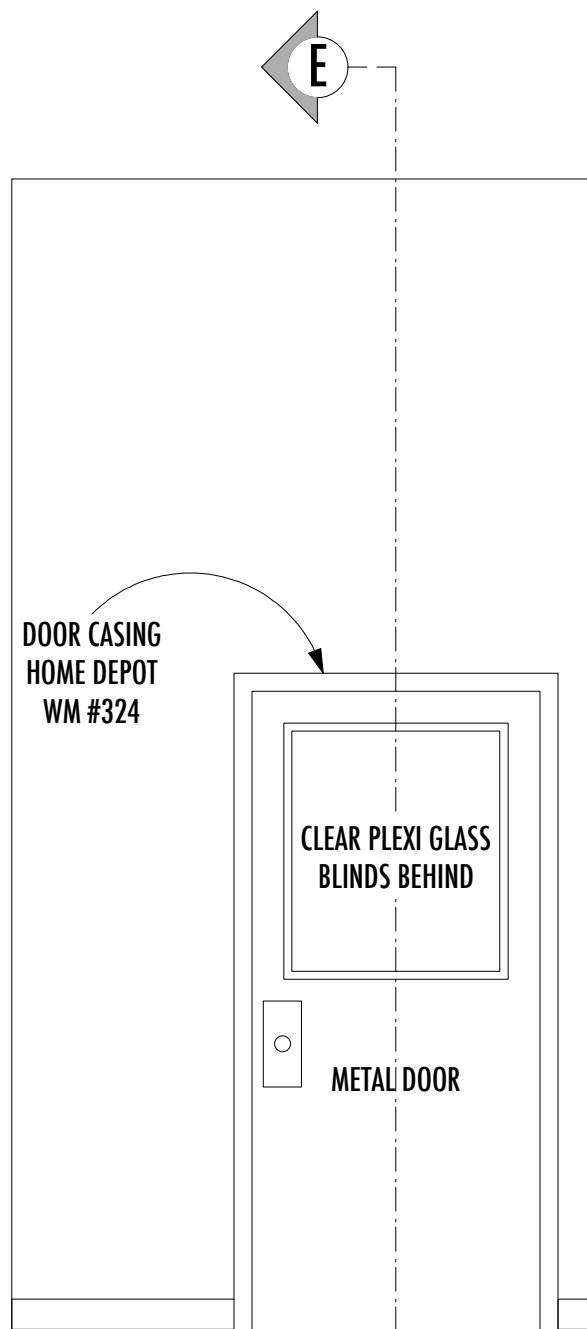


WALL "T"-FRONT ELEVATION  
Scale: 1/2" = 1'-0"

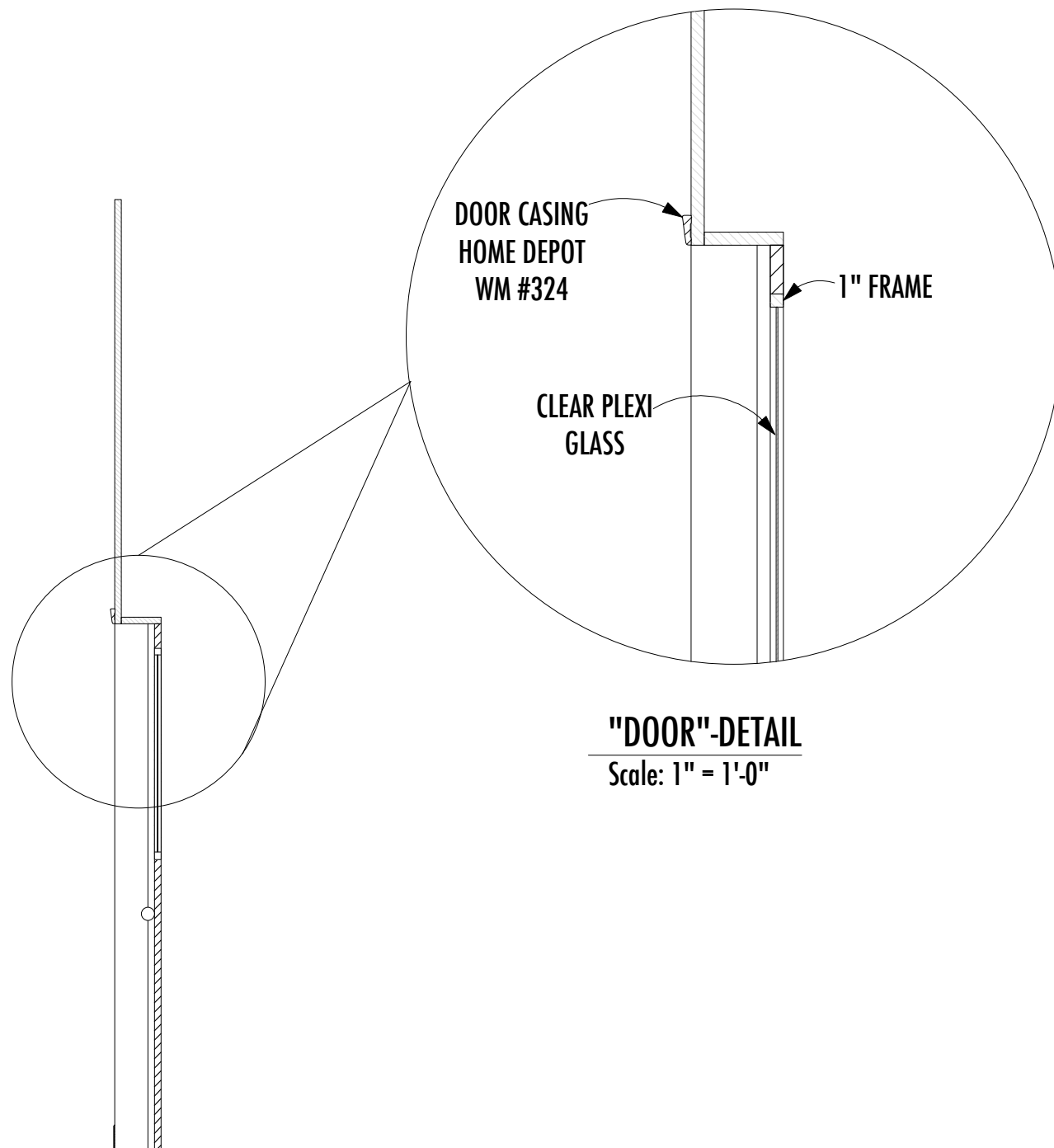


"PLYWOOD"-DETAIL  
Scale: 1" = 1'-0"

WALL "T"-SECTION "T2"  
Scale: 1/2" = 1'-0"



WALL "E"-FRONT ELEVATION  
Scale: 1/2" = 1'-0"



"DOOR"-DETAIL  
Scale: 1" = 1'-0"

WALL "E"-SECTION THROUGH DOOR  
Scale: 1/2" = 1'-0"

VECTORWORKS EDUCATIONAL VERSION



ANNE MUNDELL

AMUNDELL@ANDREW.CMU.EDU  
WWW.ANNEMUNDELL.COM

GLENGARRY GLEN ROSS

THE MALTZ JUPITER THEATRE PRESENTS

WRITTEN BY: DAVID MAMET

DIRECTED BY: J BARRY LEWIS

## PRODUCTION TEAM

SCENIC DESIGNER  
ANNE MUNDELL  
ASSOCIATE SCENIC DESIGNER  
JOEY SARNO

The designer is responsible for the visual aspects of the production only, and the specification of the designer's designs relate solely to the appearance of the design and not to matters of safety. The designer agrees to make prompt correcting alterations to any specifications found to be incompatible with proper safety precautions

THE MALTZ JUPITER THEATRE

DATE: 12-01-2014

SCALE: VARIOUS

DRAWN BY: JMS

REVISIONS:

REVISION #1: 12.02.14

REVISION #2: 12.07.14

REVISION #3: 12.12.14

## DETAILS

PLATE NO.

14

OF 14