

REV. 10/08

ON THE COME UP **DIRECTOR'S PLANS**

BASED ON PINK ONELINER. 10/08/21& WHITE PRODUCTION DRAFT 9/10/21

PAGE 1: EXT. JAY'S APT. (2011) | BRI'S RUN. PT1

PAGE 2: EXT. BRI'S RUN PT2

PAGE 3: EXT. BRI'S RUN PT3

PAGE 4: EXT. BRI'S RUN PT4

PAGE 5: EXT. BRI'S RUN-PRESENT DAY (RDA & LEE)

PAGE 6: EXT. JAY'S APT. (PRESENT DAY)

PAGE 7: INT. JAY'S APT (KITCHEN, LIVING, BRI & JAY'S RM)

PAGE 8: EXT. JIMMY'S BOXING RING

PAGE 9: INT. JIMMY'S BOXING RING

PAGE 10: EXT. HIGH SCHOOL (ENTRANCE)

PAGE 11: INT. HIGH SCHOOL (HALLWAY & LOCKERS)

PAGE 12: INT. HIGH SCHOOL (PRINCIPAL RHODES' OFFICE)

PAGE 13: INT. HIGH SCHOOL (GYMNASIUM)

PAGE 14: EXT. HIGH SCHOOL (PARKING LOT)

PAGE 15: INT. OFFICE BUILDING (JAY'S INTERVIEW)

PAGE 16: INT. SUPREME'S MANSION

PAGE 17: INT. SUPREME'S MANSION (OFFICE)

PAGE 18: EXT. MAPLEGROVE PROJECTS

PAGE 19: INT. HOTEL (LOBBY)

PAGE 20: INT. HOTEL (BRI'S ROOM)

PAGE 21: INT. HOTEL (ROOFTOP)

PAGE 22: EXT. DOC'S STUDIO

PAGE 23: INT. DOC'S STUDIO

PAGE 24: INT. THE BASEMENT CLUB

PAGE 25: INT. THE BASEMENT CLUB (GREENROOM)

PAGE 26: INT. N/A MEETING

PAGE 27: INT. RECORDING STUDIO

PAGE 28: INT. HOSPITAL HALLWAY & PATIENT ROOM

PAGE 29: INT. RADIO STATION & HALLWAY

PAGE 30: EXT. BUS STOP & DRIVING ROUTE

PAGE 31: EXT. KING CROWN'S APT.

PAGE 32: EXT. KING CROWN'S JUMP BRI & MALIK

PAGE 33: EXT. SC57 (AUNTO POOH FINDS BRI & MALIK)

PAGE 34: EXT. SC50 (RUN FROM SCHOOL RIOT)

#1



SET NAME

**EXT. JAY'S APT. (2011)
BRI'S RUN (PART 1)**

LOCATION:

**412 JAMES P BRAWLEY NW.
ATLANTA, GA 30314**

ON THE COME UP

#2



SET NAME

EXT. BRI'S RUN-2011 (PART 2)

LOCATION:

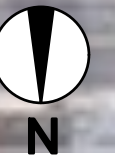
412 JAMES P. BRAWLEY NW.
ATLANTA, GA 30314

ON THE COME UP

#3



BRI RUNS PT. 3

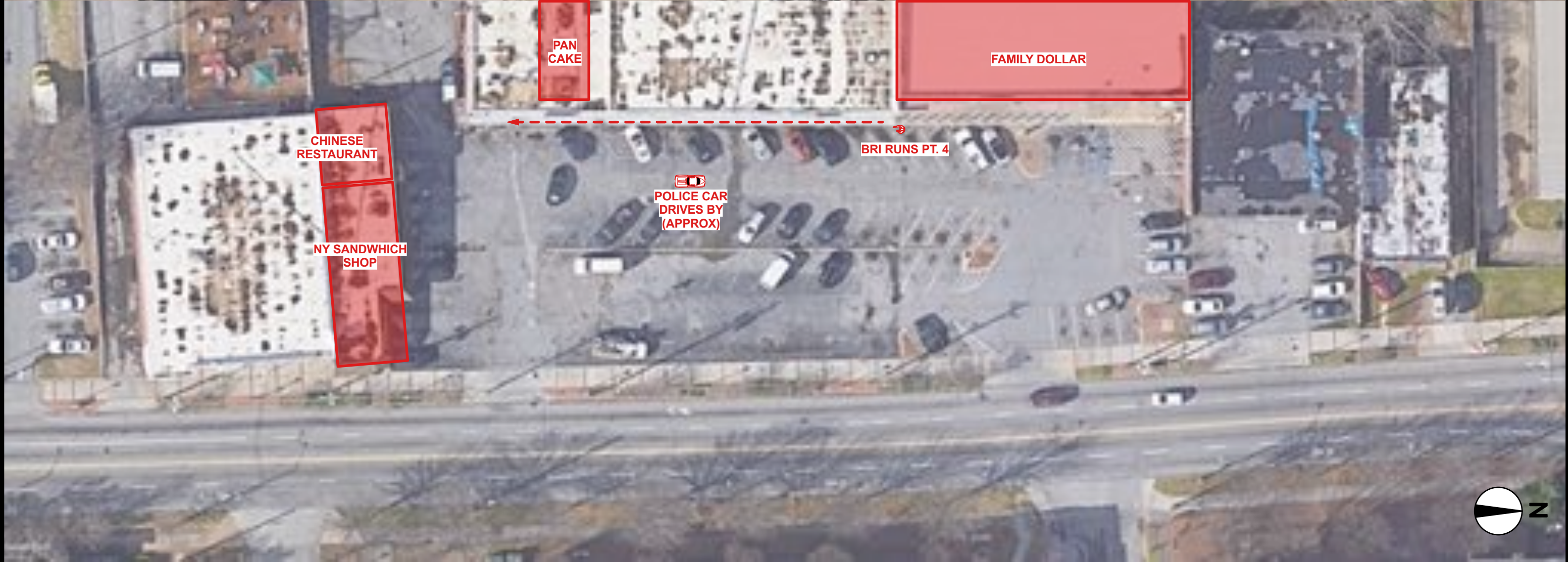


100FT

SET NAME
EXT. BRI'S RUN-2011(PART 3)

LOCATION:
DILAPIDATED SCHOOL
627 ENGLISH AVE. NW.
ATLANTA, GA 30318

ON THE COME UP



40FT

SET NAME
EXT. BRI'S RUN-2011(PART 4)
STRIP MALL

LOCATION:
ELEXIS PROPERTIES STRIP MALL
593 JOSEPH E. LOWERY BLVD SW.
ATLANTA, GA 30310

ON THE COME UP

#5

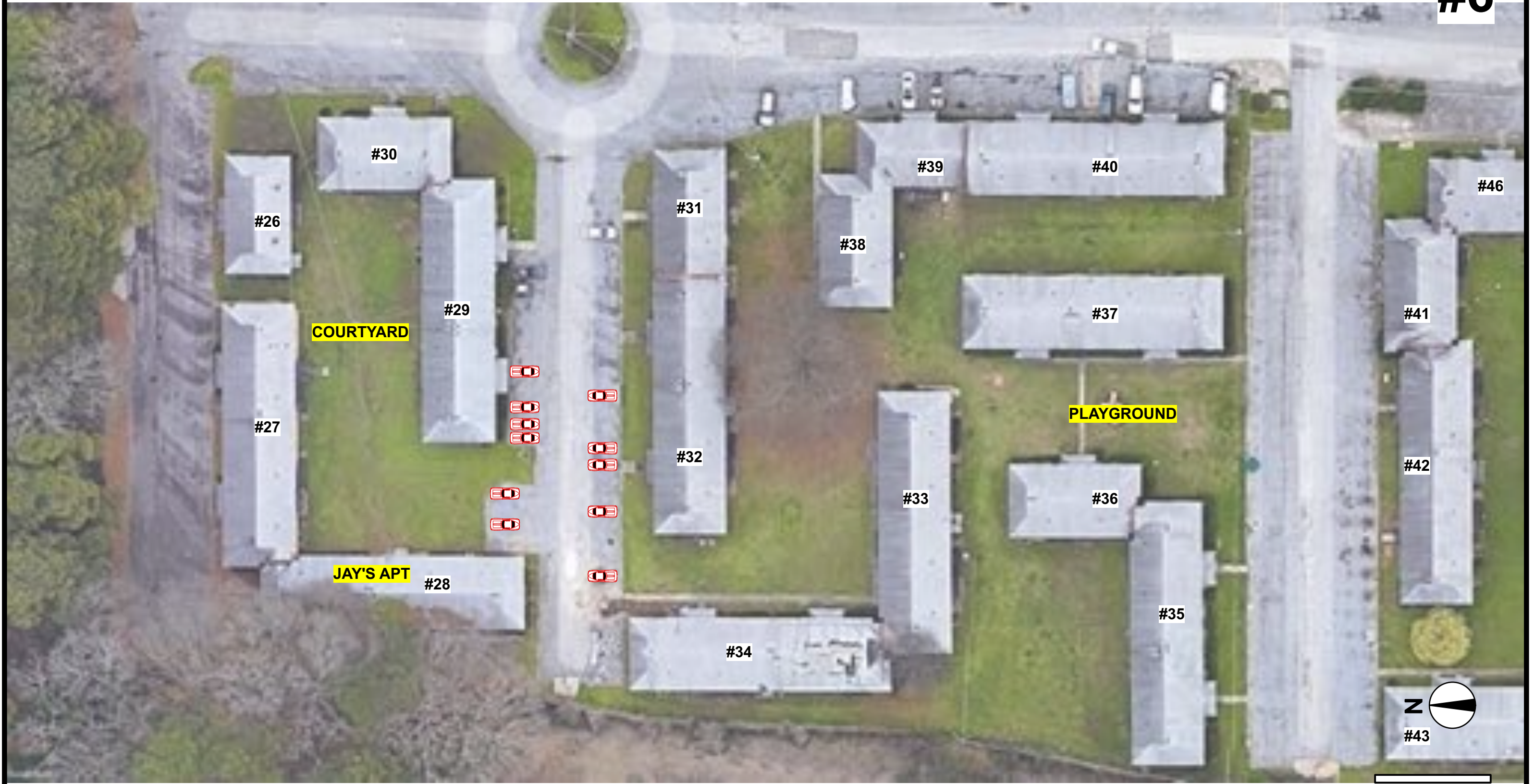


40FT

SET NAME
EXT. BRI'S RUN-PRESENT DAY
RDA & LEE

LOCATION:
"LOWER RDA"
810 RALPH DAVID ABERNATHY BLVD SW
ATLANTA, GA 30310

ON THE COME UP

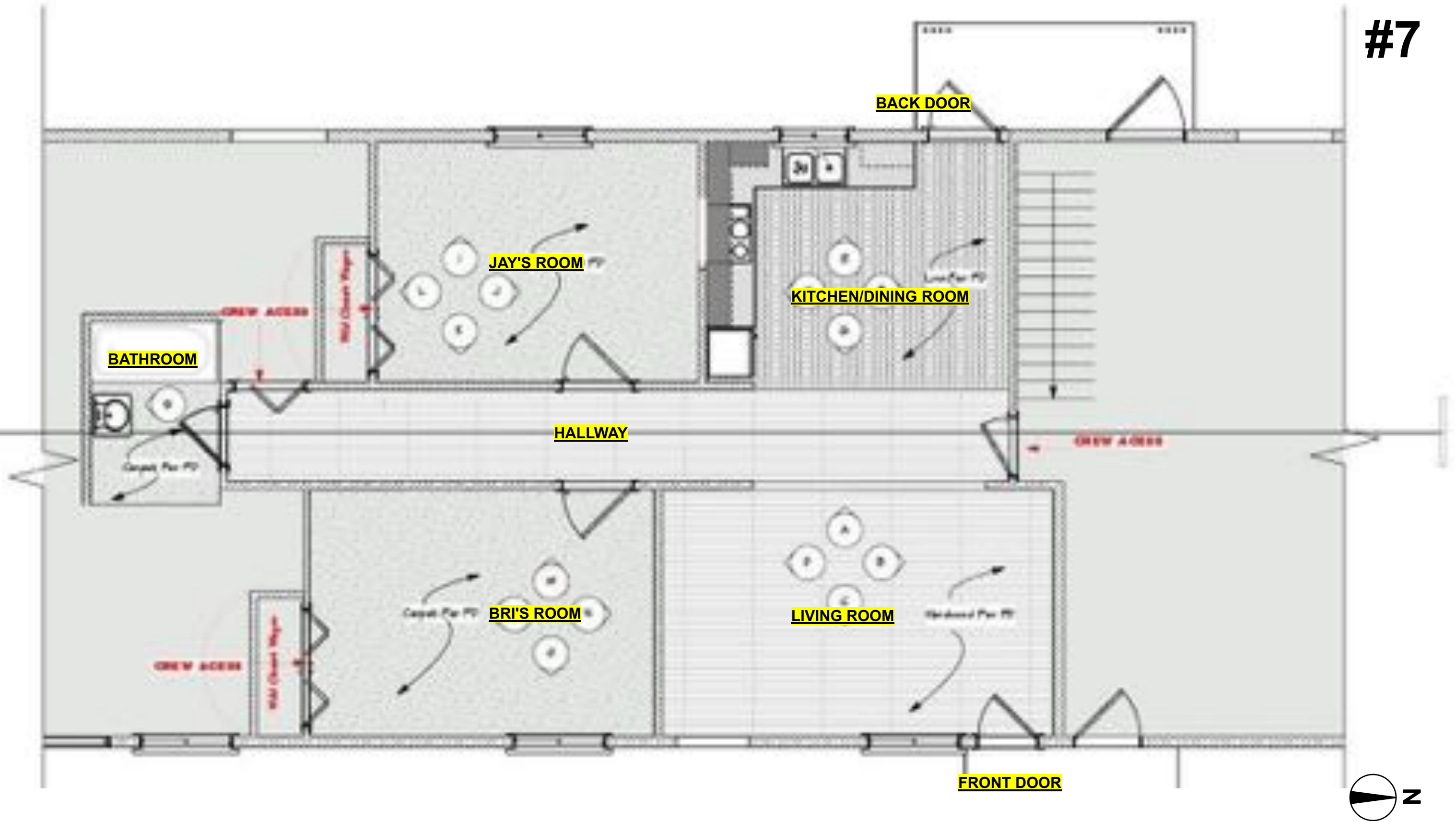


SET NAME
 EXT. JAY'S APT. (PRESENT DAY)

LOCATION:
 COLLIER HEIGHTS APARTMENTS
 2125 JOSEPH E. BOONE BLVD NW.
 ATLANTA, GA 30314

ON THE COME UP

#7



SET NAME
 INT. JAY'S APARTMENT
 INT. BRI'S ROOM
 INT.. JAY'S ROOM
 INT. KITCHEN & LIVING RM

SCALE:
 1/4"=1'-0"

LOCATION:
 COLLIER HEIGHTS APARTMENTS
 2125 JOSEPH E. BOONE BLVD NW.
 ATLANTA, GA 30314

ON THE COME UP

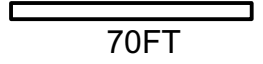


SET NAME

EXT. JIMMY'S BOXING RING

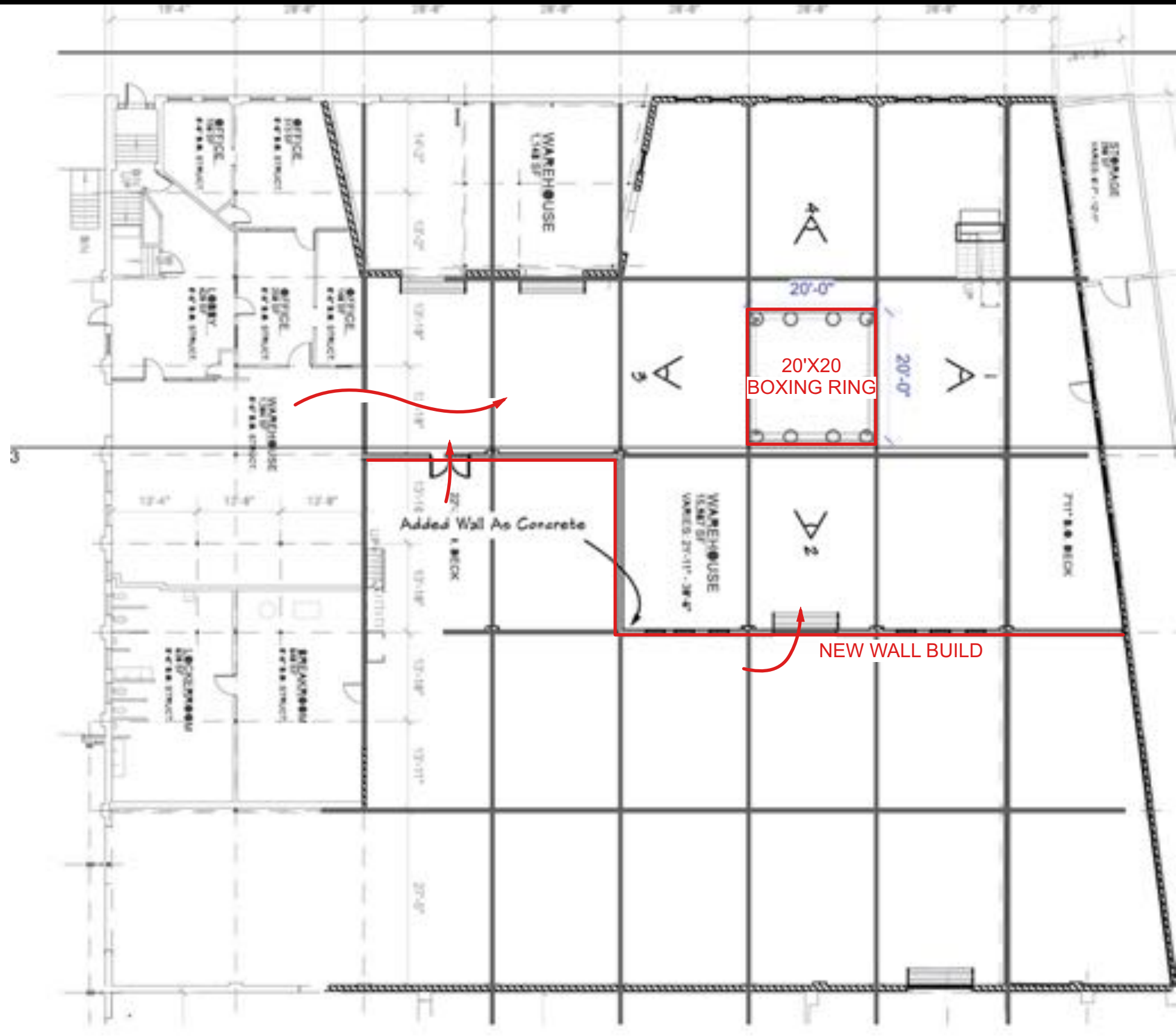
LOCATION:

**OLD CONKLIN METALS BUILDINGS
236 MOORE ST. SE.
ATLANTA, GA 30335**



ON THE COME UP

#9



SET NAME

INT. JIMMY'S BOXING RING

SCALE:

1/8"=1'-0"

LOCATION:

OLD CONKLIN METALS BUILDINGS
236 MOORE ST. SE.
ATLANTA, GA 30335

ON THE COME UP

#10

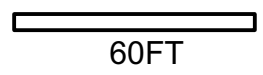


SET NAME

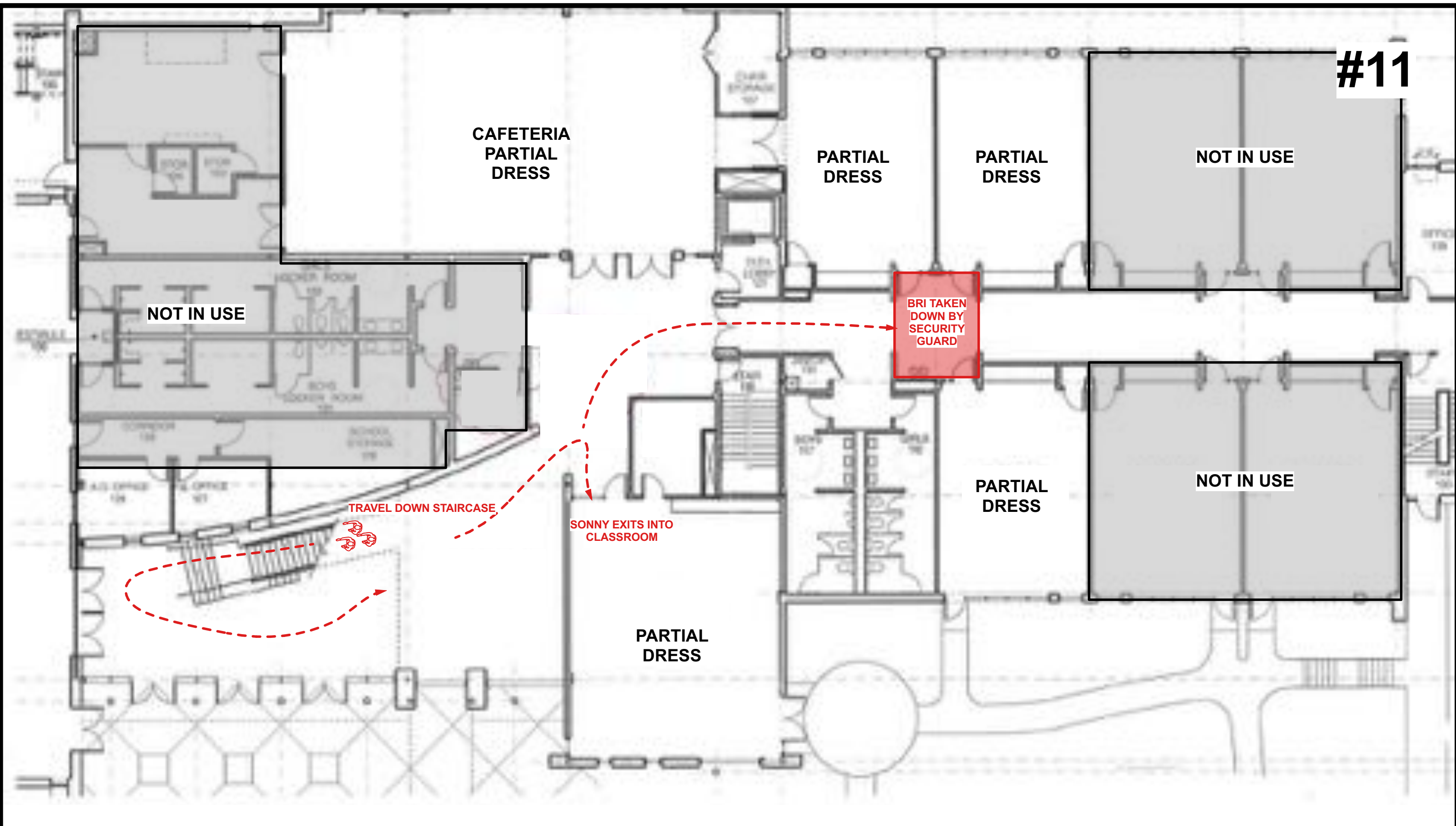
EXT. HIGH SCHOOL
(ENTRANCE)

LOCATION:

ST. MARTIN'S EPISCOPAL SCHOOL
3110-A ASHFORD DUNWOODY R.
ATLANTA, GA 30319



ON THE COME UP



SET NAME
**INT. HIGH SCHOOL
 (HALLWAY-LOCKERS)**

SCALE:
 1/8"=1'-0"

LOCATION:
 ST. MARTIN'S EPISCOPAL SCHOOL
 3110-A ASHFORD DUNWOODY R.
 ATLANTA, GA 30319

ON THE COME UP

#12

**PRINCIPAL RHODE'S
OFFICE**



SET NAME

**INT. HIGH SCHOOL
(PRINCIPAL RHODE'S OFFICE)**

SCALE:

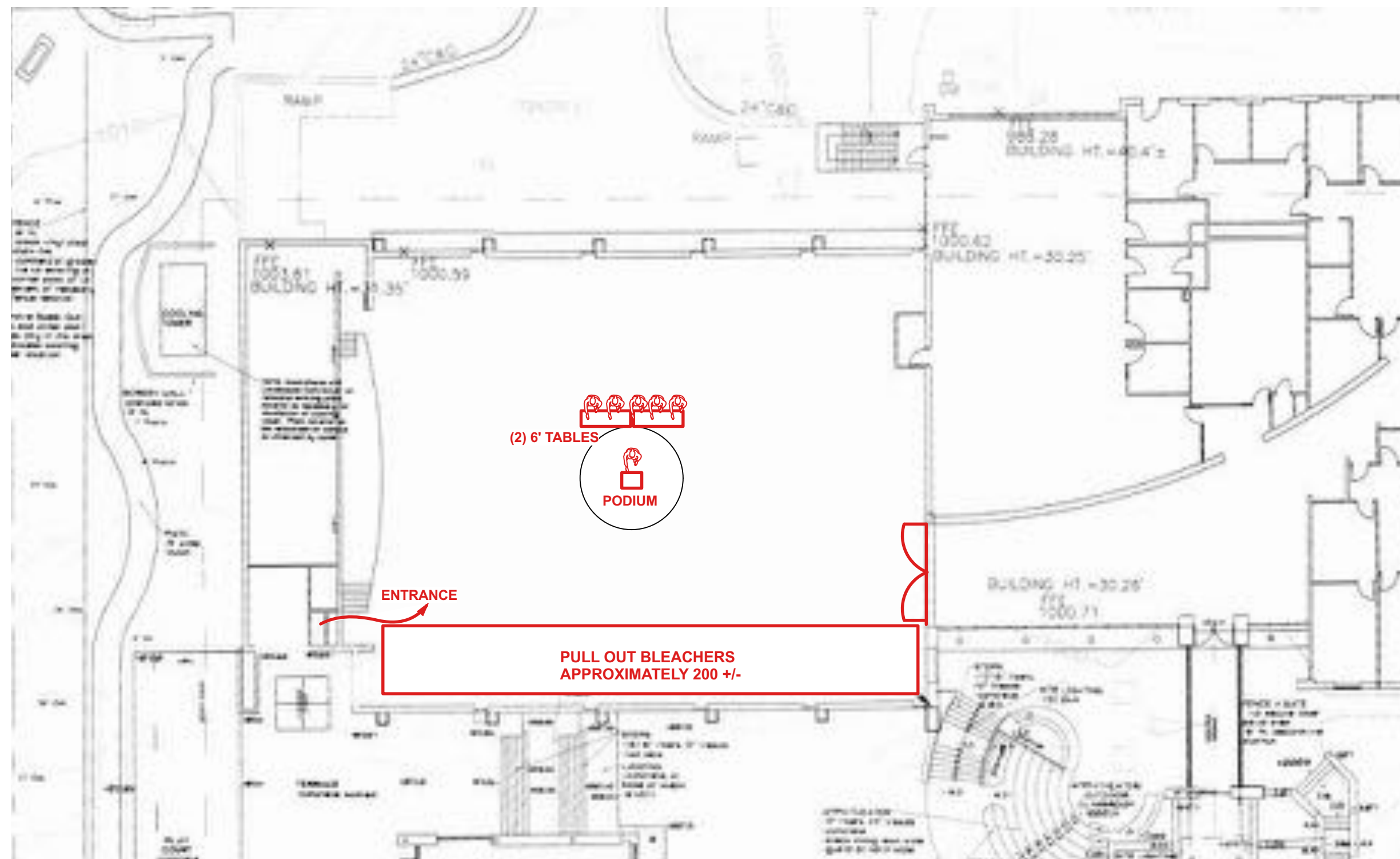
1/4"=1'-0"

LOCATION:

**GREATER ATLANTA CHRISTIAN SCHOOL
1575 INDIAN TRAIL LILBURN RD. NW.
NORCROSS, GA 30093**

ON THE COME UP

#13



SET NAME

INT. HIGH SCHOOL
(GYMNASIUM)

SCALE:

1/16"=1'-0"

LOCATION:

ST. MARTIN'S EPISCOPAL SCHOOL
3110-A ASHFORD DUNWOODY R.
ATLANTA, GA 30319

ON THE COME UP

#14



PARKING LOT WITH PICTURE CARS

JAY CATCHES UP TO SUPERINTENDENT



100FT

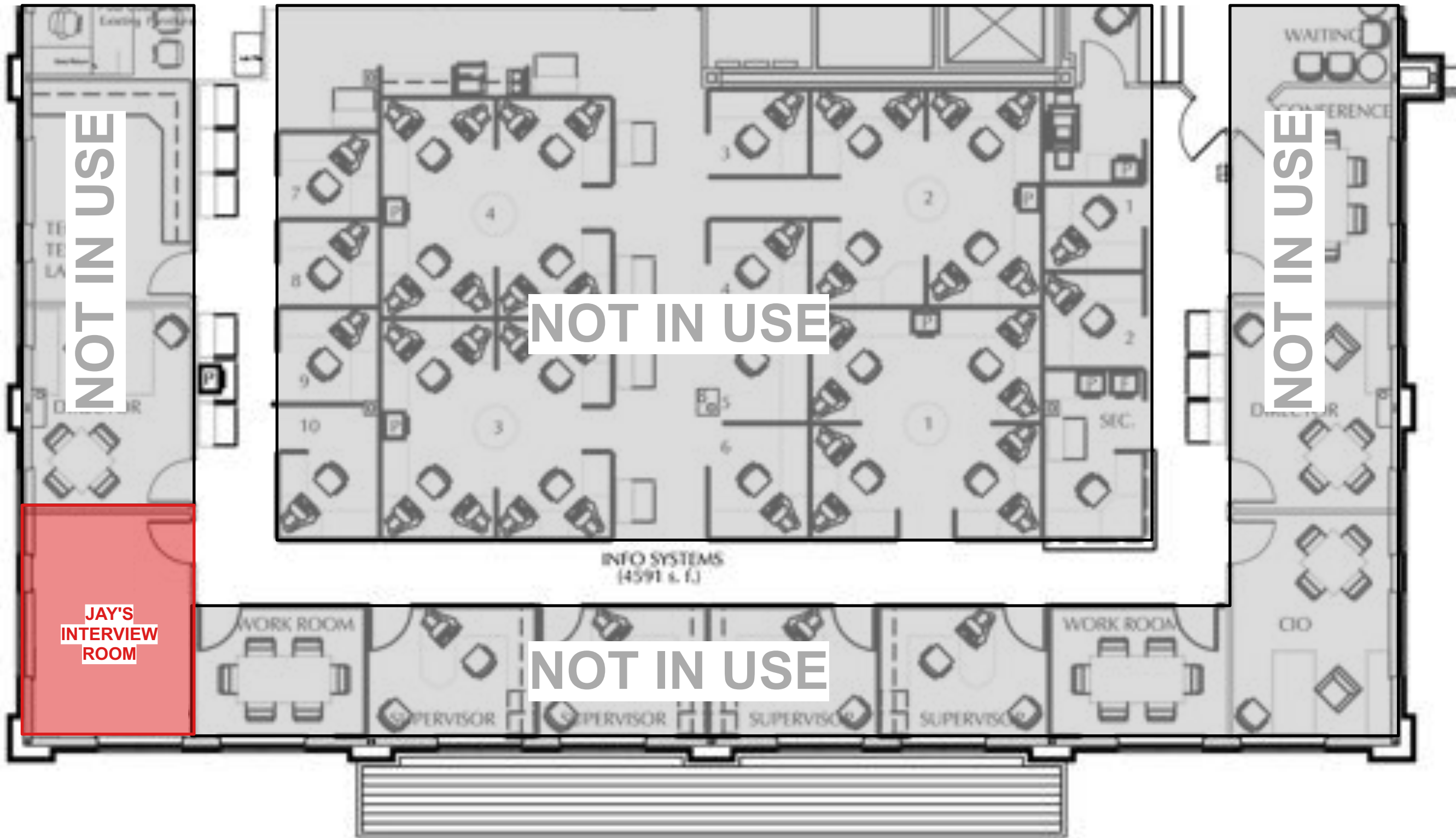
SET NAME

**EXT. HIGH SCHOOL
(PARKING LOT)**

LOCATION:

**GREATER ATLANTA CHRISTIAN SCHOOL
1575 INDIAN TRAIL LILBURN RD. NW.
NORCROSS, GA 30093**

ON THE COME UP



SET NAME
**INT. OFFICE BUILDING
 (JAY'S INTERVIEW)**

SCALE:
 1/8"=1'-0"

LOCATION:
 SOUTHERN REGIONAL MEDICAL CENTER
 11 UPPER RIVERDALE RD.
 RIVERDALE, GA 30274

ON THE COME UP

#16

PRIVATE RESIDENCE

PLAN FOLLOWING TECH SCOUT

SET NAME

INT. SUPREME'S MANSION

SCALE:

LOCATION:

**SOUTHSCOUT HOUSE
1300 W. GARMON RD. NW.
SANDY SPRINGS, GA 30327**

ON THE COME UP

#17

PRIVATE RESIDENCE

PLAN FOLLOWING TECH SCOUT

SET NAME

**INT. SUPREME'S MANSION
(OFFICE)**

SCALE:

LOCATION:

**SOUTHSCOUT HOUSE
1300 W. GARMON RD. NW.
SANDY SPRINGS, GA 30327**

ON THE COME UP

#18



30FT

SET NAME

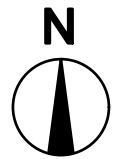
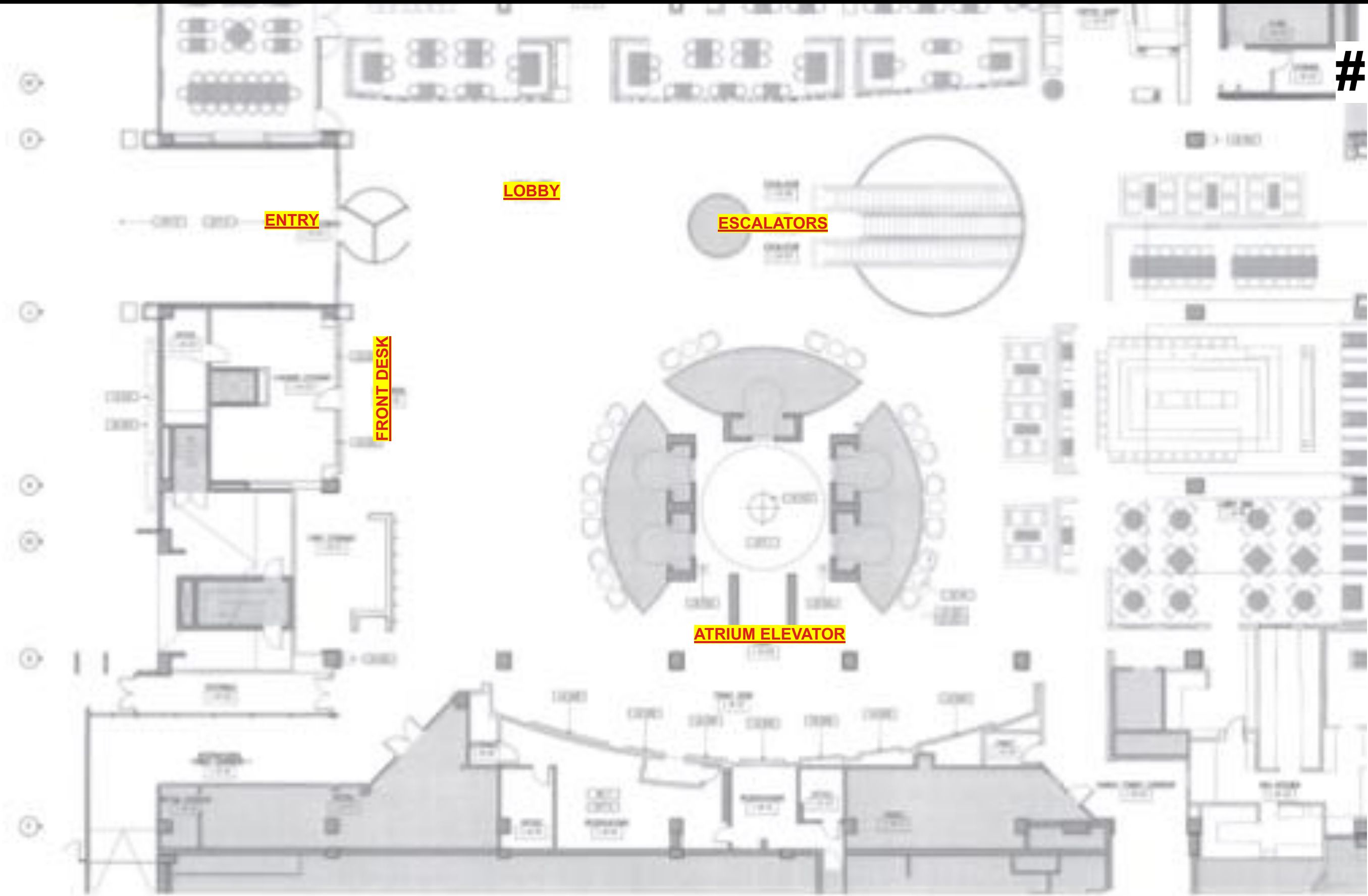
EXT. MAPLEGROVE PROJECTS

LOCATION:

COSBY SPEAR MEMORIAL TOWERS
355 NORTH AVENUE NE.
ATLANTA, GA 30308

ON THE COME UP

#19



SET NAME

INT. HOTEL
(LOBBY)

SCALE:

1/16"=1'-0"

LOCATION:

HYATT REGENCY ATLANTA
265 PEACHTREE ST. NW
ATLANTA, GA 30303

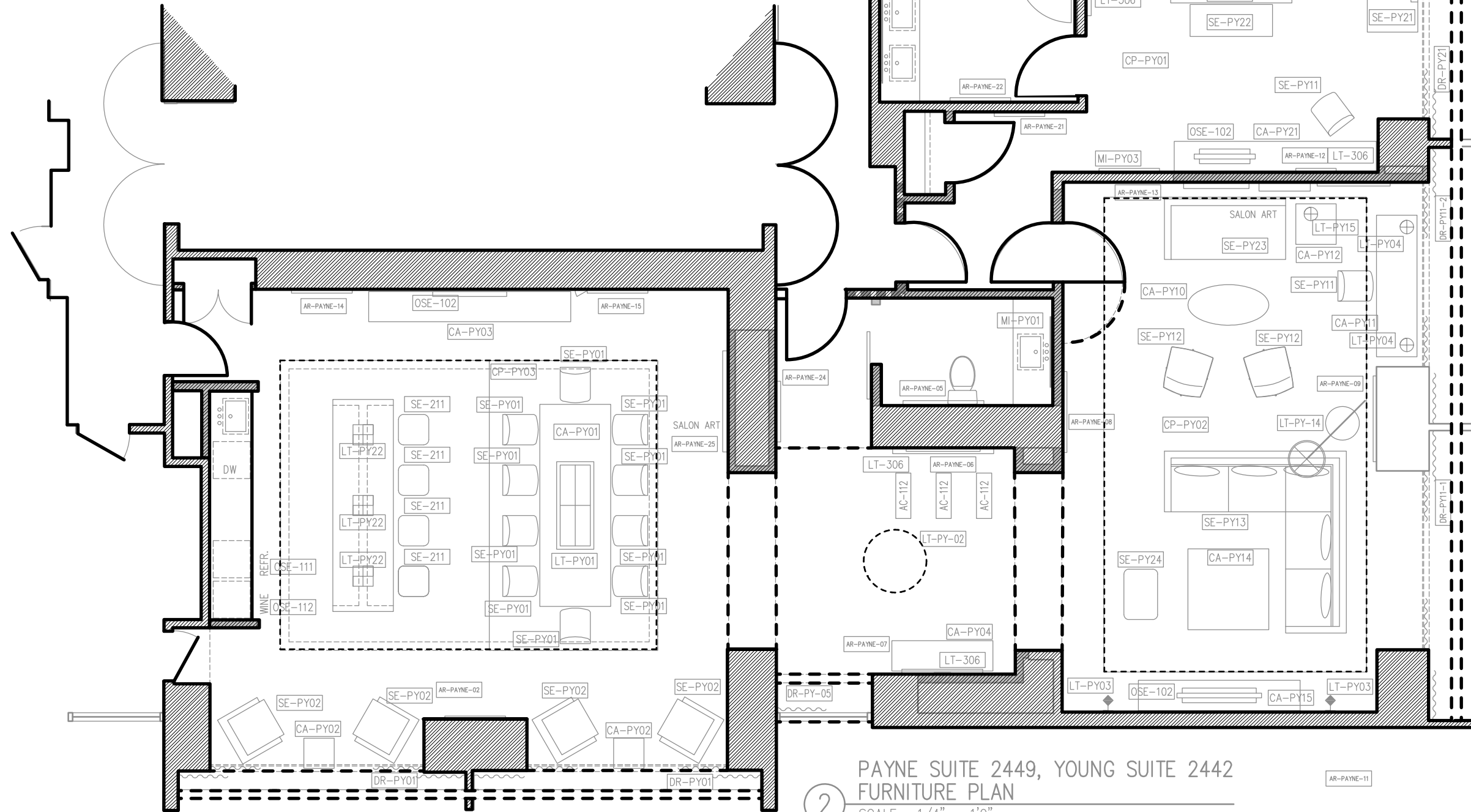
ON THE COME UP

1

PAYNE SUITE 2449, YOUNG SUITE 2442
FINISH PLAN
SCALE : 1/4" = 1'0"

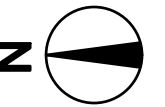
SITTING ROOM
FLOOR - WOOD FLOOR - WD102
BASE - PAINTED WOOD -WB201/ PT403
WALLS - WALLCOVERING - WC203
BEAMS - PAINT - PT400
CEILING - GYP. BOARD - PAINT - PT401

GENERAL



2

PAYNE SUITE 2449, YOUNG SUITE 2442
FURNITURE PLAN
SCALE : 1/4" = 1'0"



SET NAME

INT. HOTEL
(BRI'S ROOM)

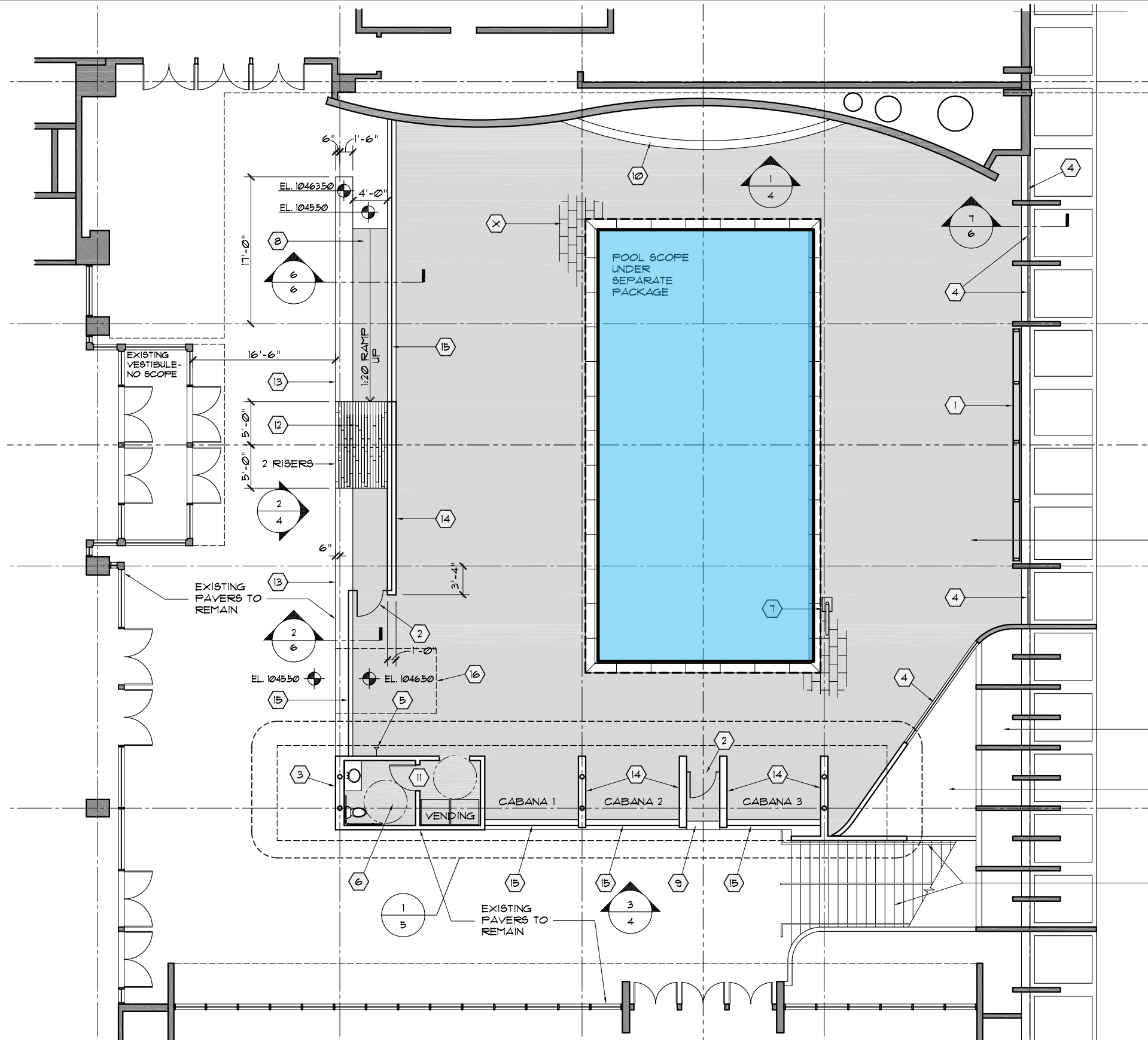
SCALE:

1/4"=1'-0"

LOCATION:

HYATT REGENCY ATLANTA
265 PEACHTREE ST. NW
ATLANTA, GA 30303

ON THE COME UP



SET NAME

INT. HOTEL
(ROOFTOP)

SCALE:

LOCATION:

HYATT REGENCY ATLANTA
265 PEACHTREE ST. NW
ATLANTA, GA 30303

ON THE COME UP

#22



DOC'S STUDIO



30FT

SET NAME

EXT. DOC'S STUDIO
(ATLANTA)

LOCATION:

DILAPIDATED HOUSE
555 PAINES ST. NW.
ATLANTA, GA 30318

ON THE COME UP

#23

BLUE ROOM STUDIOS

PLAN FOLLOWING TECH SCOUT

SET NAME

**INT. DOC'S STUDIO
(ATLANTA)**

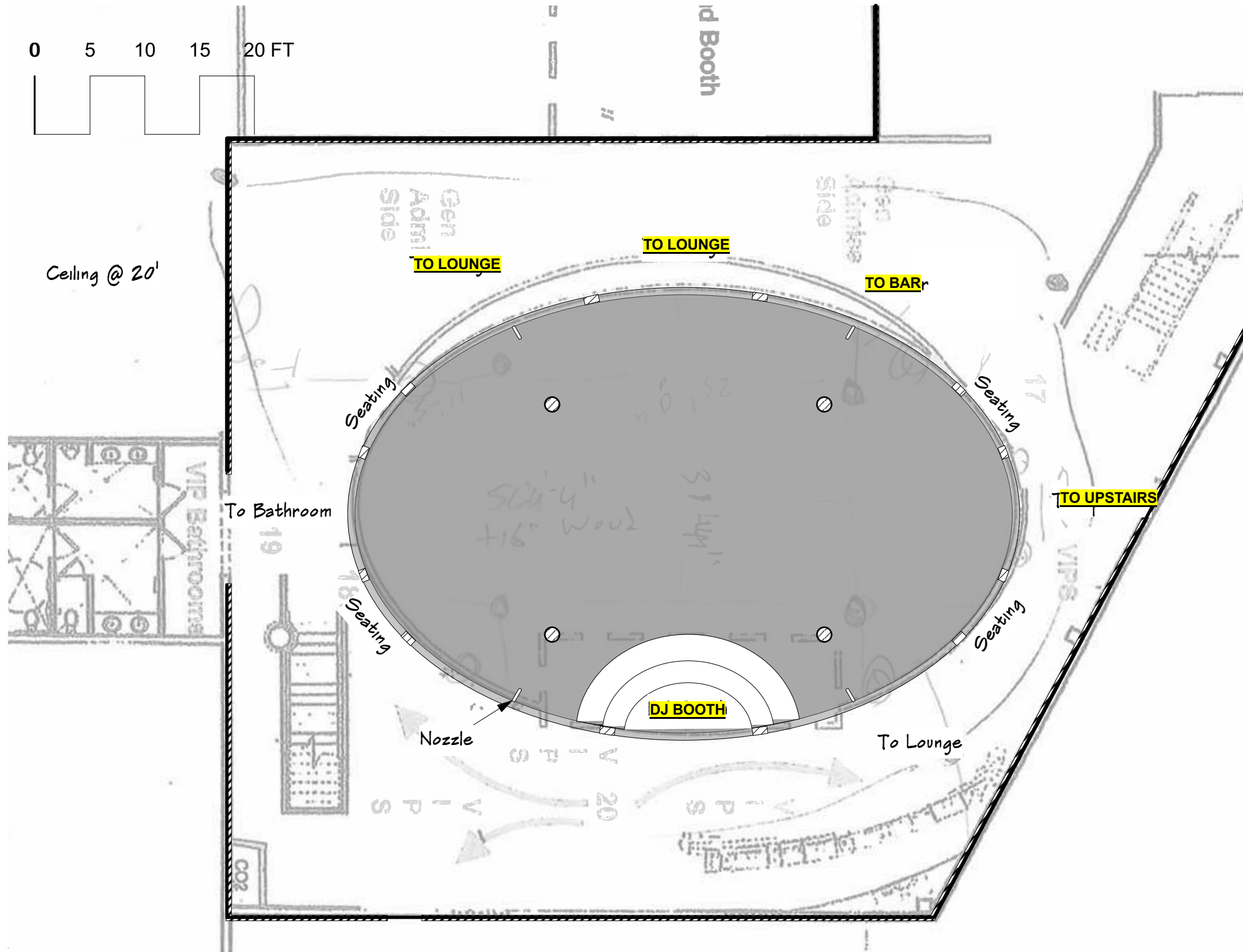
SCALE:

LOCATION:

**BLUE SOUTH RECORDING STUDIO
500 BISHOP STREET SUITE A7
ATLANTA, GA 30318**

ON THE COME UP

#24



SET NAME
INT. THE BASEMENT CLUB

SCALE:
1/8"=1'-0"

LOCATION:
DISTRICT ATLANTA
269 ARMOUR DR. NE.
ATLANTA, GA 30324

ON THE COME UP

#25

+18"

PIPE & BASE

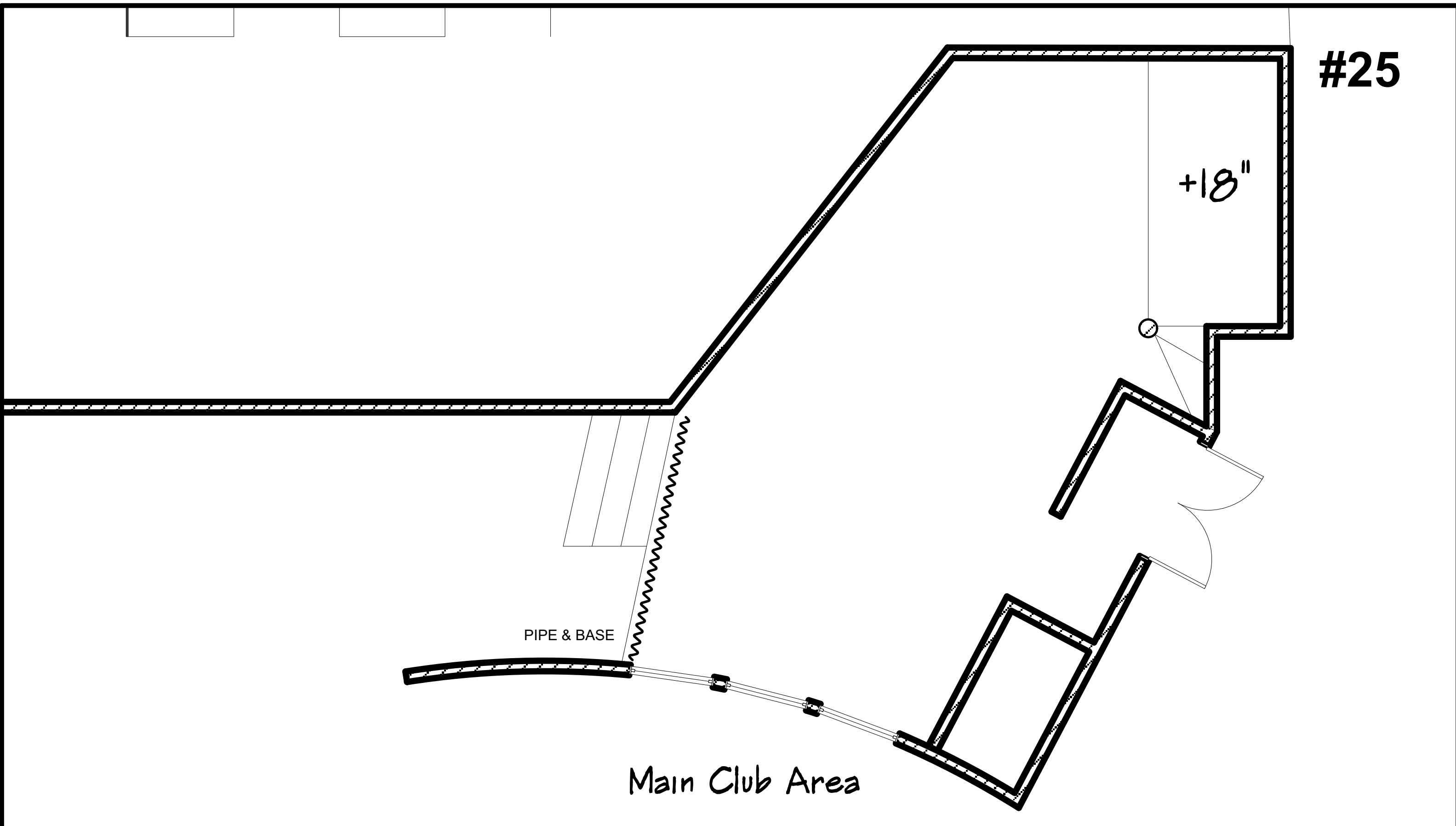
Main Club Area

SET NAME
 INT. THE BASEMENT CLUB
 (GREEN ROOM)

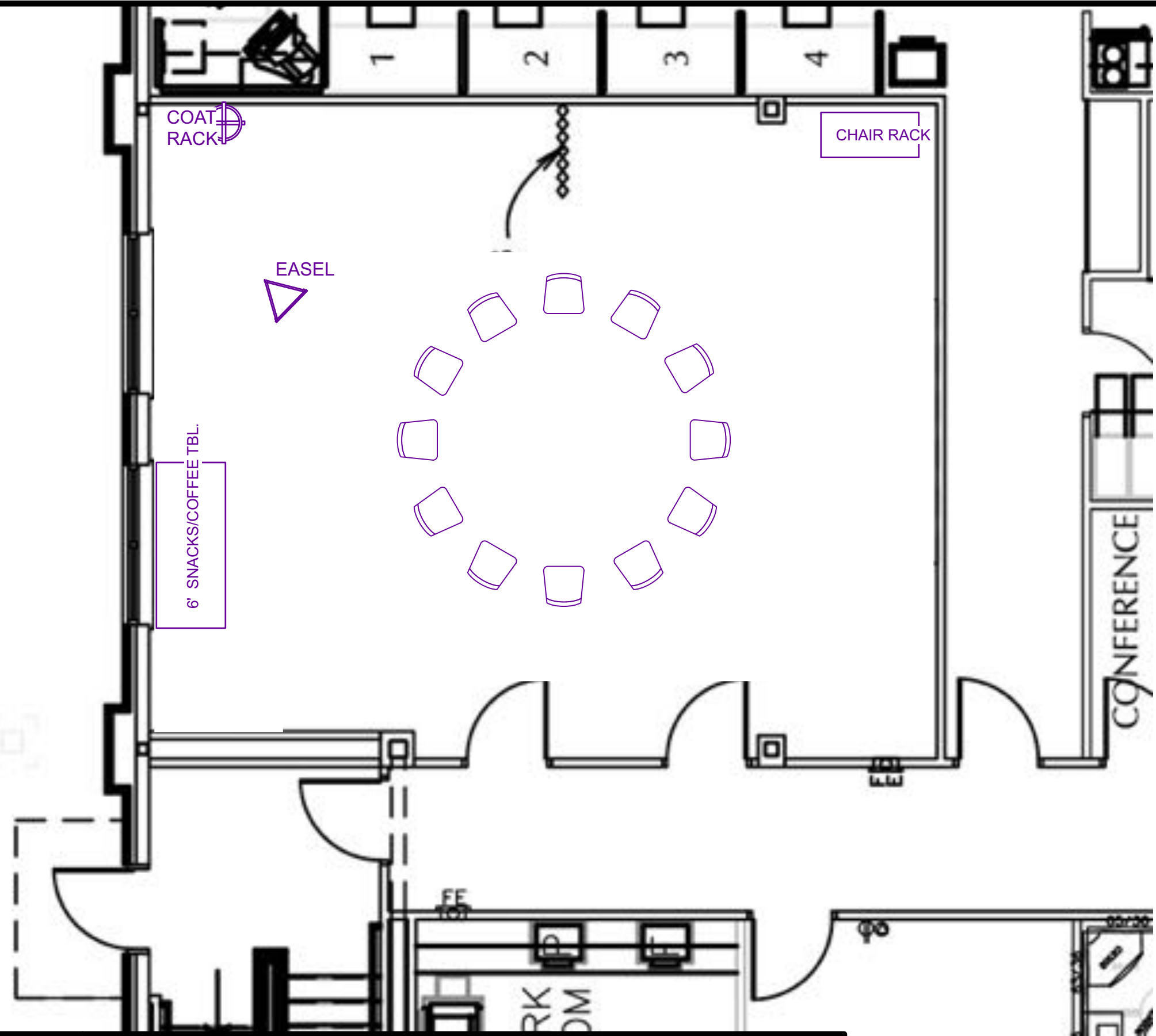
SCALE:
 1/8"=1'-0"

LOCATION:
 DISTRICT ATLANTA
 269 ARMOUR DR. NE.
 ATLANTA, GA 30324

ON THE COME UP



#26



SET NAME

INT. N/A MEETING

SCALE:

1/4"=1'-0"

LOCATION:

SOUTHERN REGIONAL MEDICAL CENTER
11 UPPER RIVERDALE RD.
RIVERDALE, GA 30274

ON THE COME UP

#27

BLUE ROOM STUDIOS

PLAN FOLLOWING TECH SCOUT

SET NAME

INT. RECORDING STUDIO

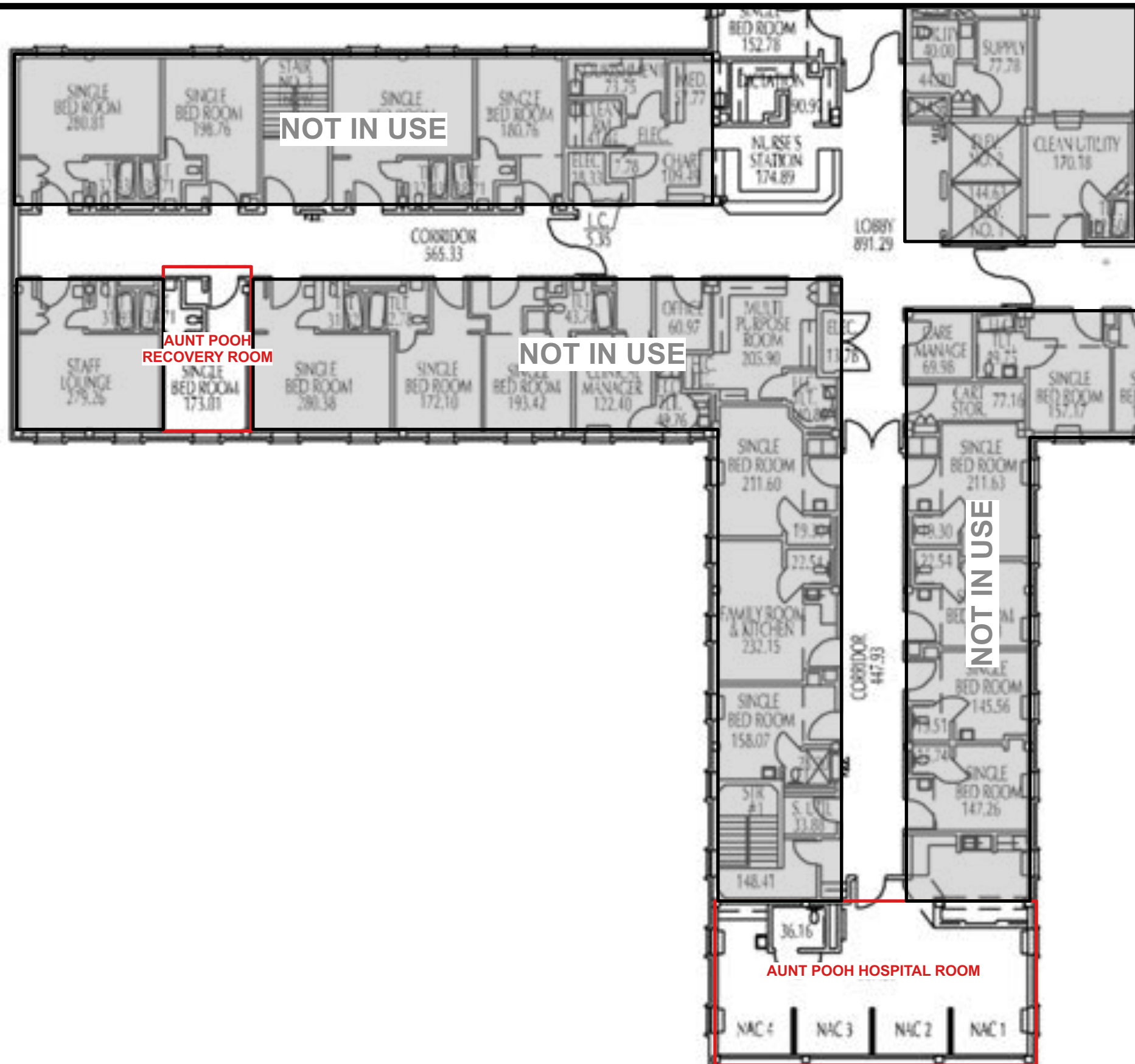
SCALE:

LOCATION:

**BLUE SOUTH RECORDING STUDIO
500 BISHOP STREET SUITE A7
ATLANTA, GA 30318**

ON THE COME UP

#28



SET NAME
INT. HOSPITAL HALLWAY
& PATIENT ROOM

SCALE:
1/16"=1'-0"

LOCATION:
SOUTHERN REGIONAL MEDICAL CENTER
11 UPPER RIVERDALE RD.
RIVERDALE, GA 30274

ON THE COME UP

#29

MORRIS COLLEGE

PLAN FOLLOWING TECH SCOUT

SET NAME

INT. RADIO STATION & HALLWAY

SCALE:

LOCATION:

**MORRIS BROWN COLLEGE
102.6 THE SITUATION
1 WALNUT ST. SW 2ND FLOOR
ATLANTA, GA 30314**

ON THE COME UP

#30



BUS STOP
BRI BOARDS

BUS STOP
MALIK & SONNY
BOARD

BUS ROUTE



100FT

SET NAME

EXT. BUS STOP
& DRIVING ROUTE

LOCATION:

"UPPER RDA"
1561 RALPH DAVID ABERNATHY BLVD. SW.
ATLANTA, GA 30310

ON THE COME UP

#31



SET NAME

EXT. KING CROWNS APT.

LOCATION:

VERBENA GARDEN APARTMENTS
138 LAMAR AVE. NW.
ATLANTA, GA 30318

ON THE COME UP

#32



50FT

SET NAME
**EXT. KING CROWNS
JUMP BRI & MALIK**

LOCATION:
**VERBENA GARDEN APARTMENTS
138 LAMAR AVE. NW.
ATLANTA, GA 30318**

ON THE COME UP

#33



40FT

SET NAME
SC.57 (AUNT POOH FINDS
BRI & MALIK ON THE STREET)

LOCATION:
PATHWAY CHRISTIAN CHURCH
1517 RALPH DAVID ABERNATHY BLVD SW
ATLANTA, GA 30310

ON THE COME UP

#34



BRI, SONNY & MALIK
RUN FROM SCHOOL RIOT

688 Peeples St SW



30FT

SET NAME

**SC.50 BRI, MALIK, & SONNY RUN
FROM SCHOOL RIOT**

LOCATION:

**PEEPLES STREET
688 PEEPLES ST. SW
ATLANTA, GA 30310**

ON THE COME UP