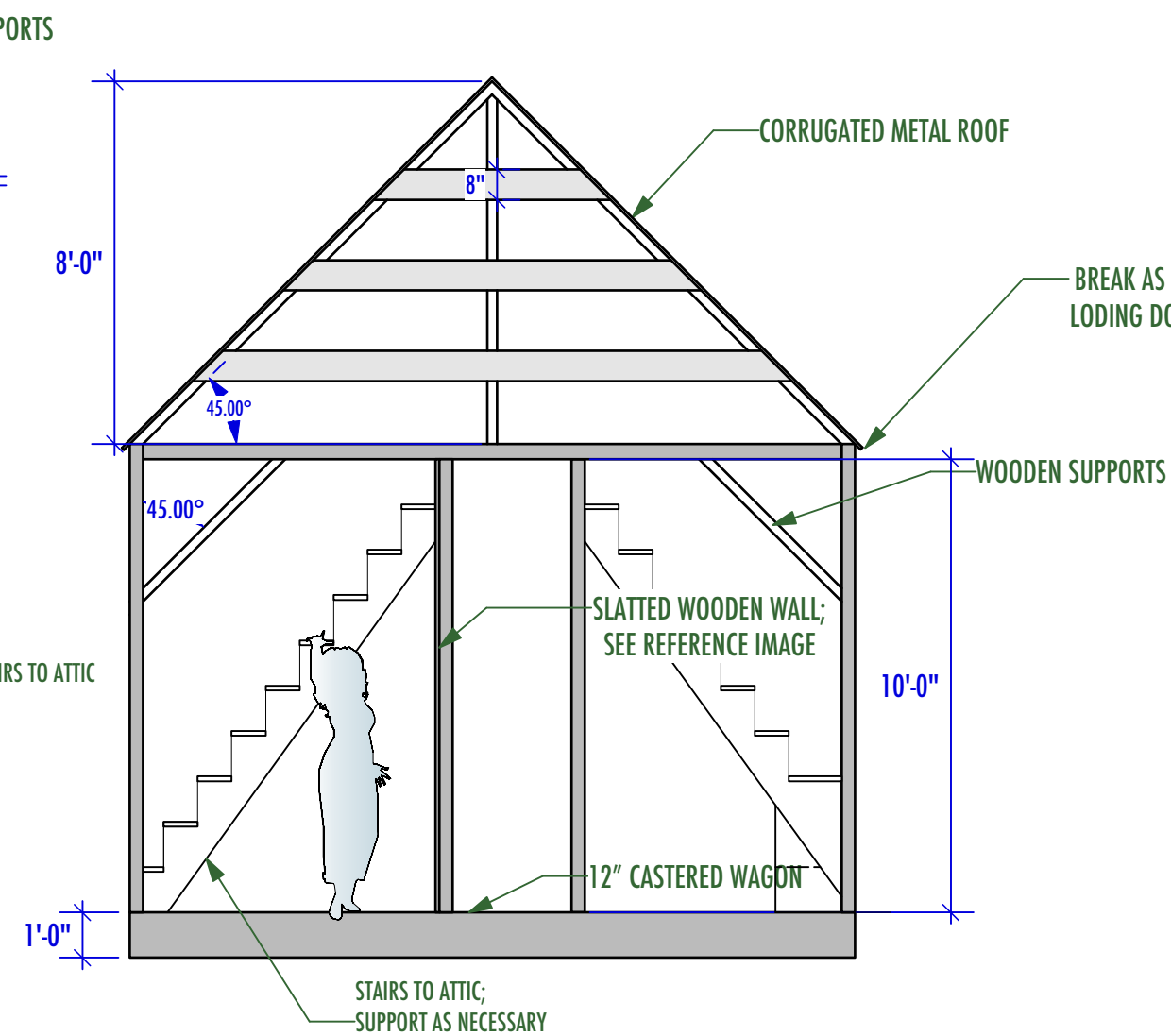
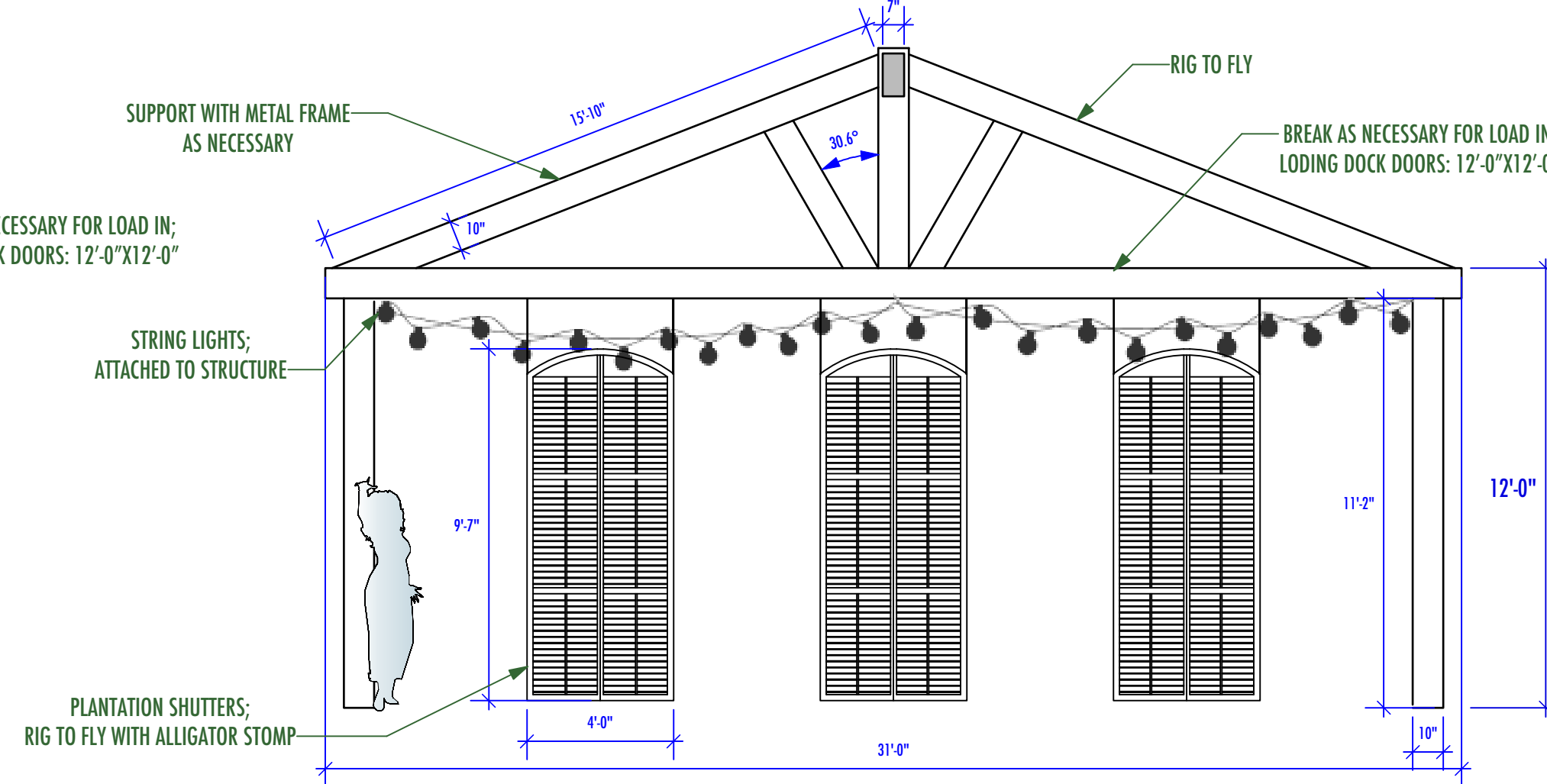


"ACADIAN HOUSE"-FLATTENED FRONT ELEVATION
Scale: 1/4" = 1'-0"



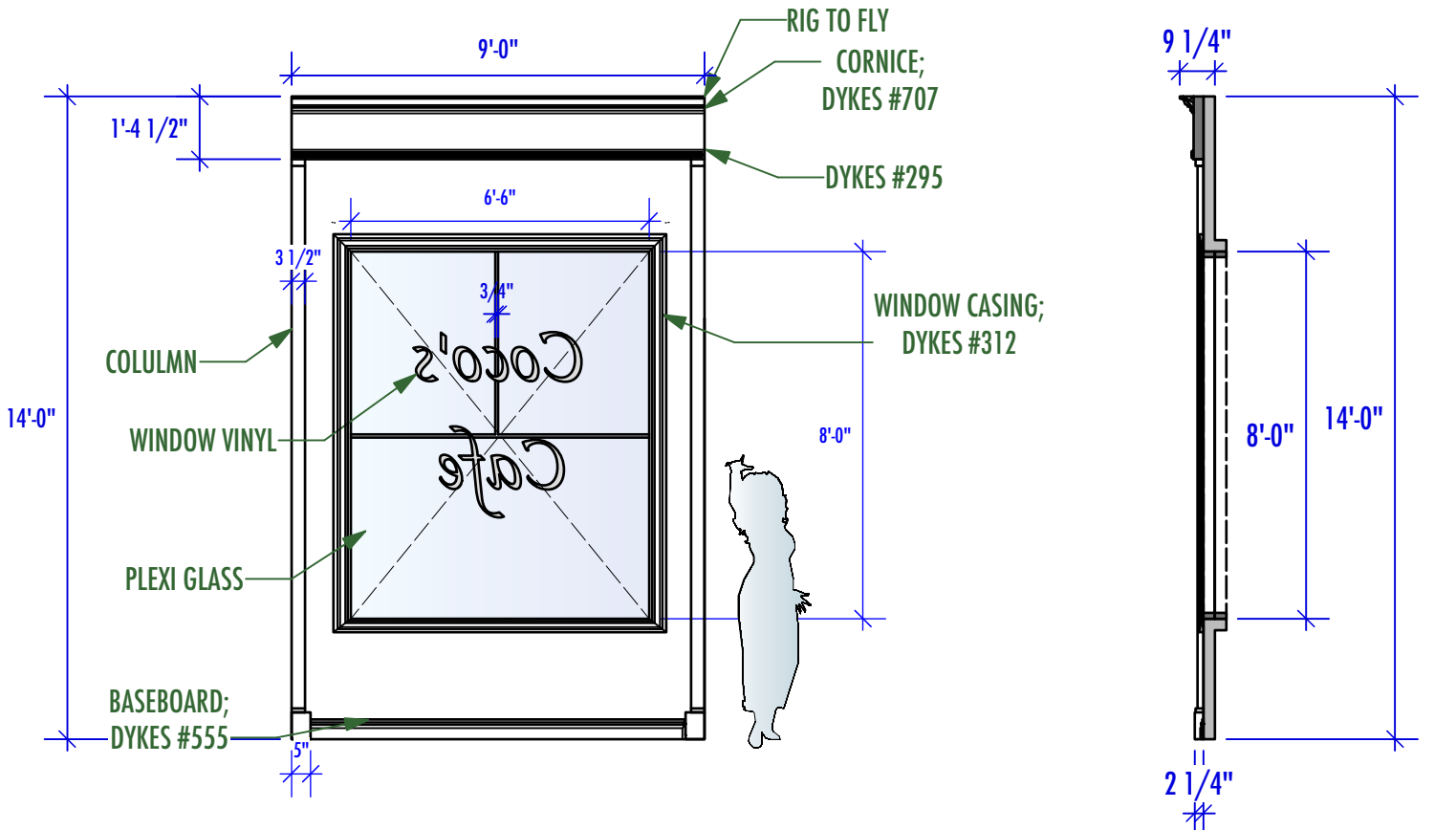
"ACADIAN HOUSE"-SIDE VIEW
Scale: 1/4" = 1'-0"

BUILD SIDE OF HOUSE X (2)



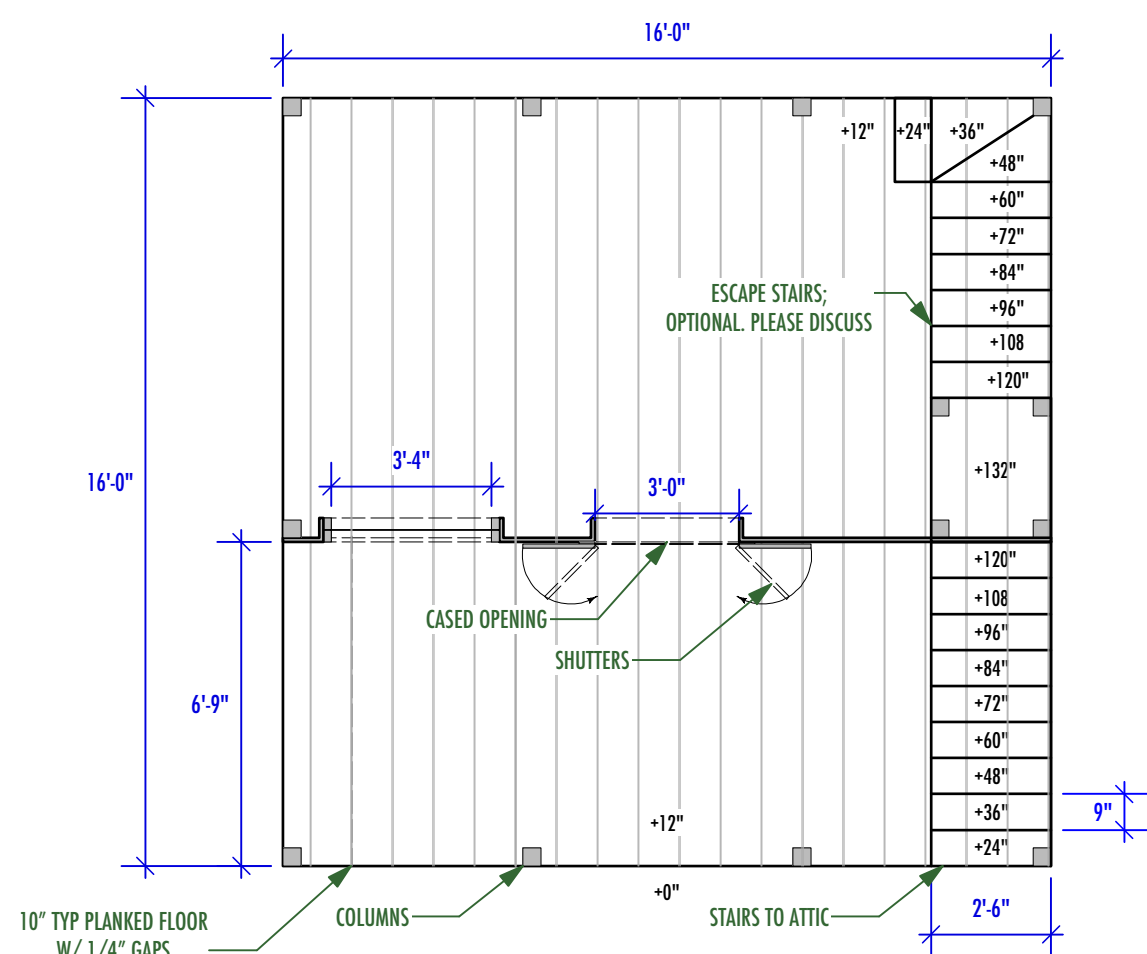
"ALLIGATOR STOMP"-FRONT ELEVATION
Scale: 1/4" = 1'-0"

"ALLIGATOR STOMP"-SIDE VIEW
Scale: 1/4" = 1'-0"



"COCO'S CAFE"-FRONT ELEVATION
Scale: 1/4" = 1'-0"

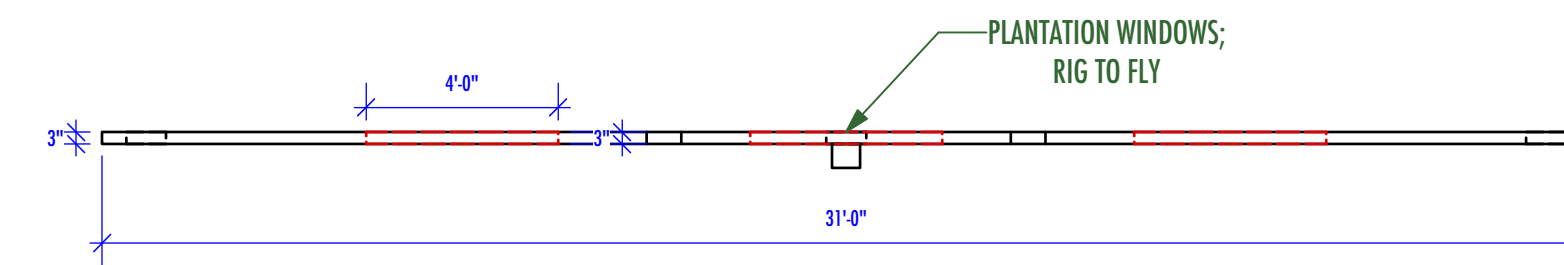
"COCO'S CAFE"-CL-SECTION
Scale: 1/4" = 1'-0"



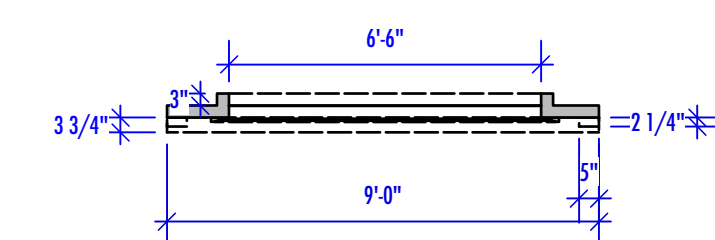
"ACADIAN HOUSE"-DECK LAYOUT
Scale: 1/4" = 1'-0"



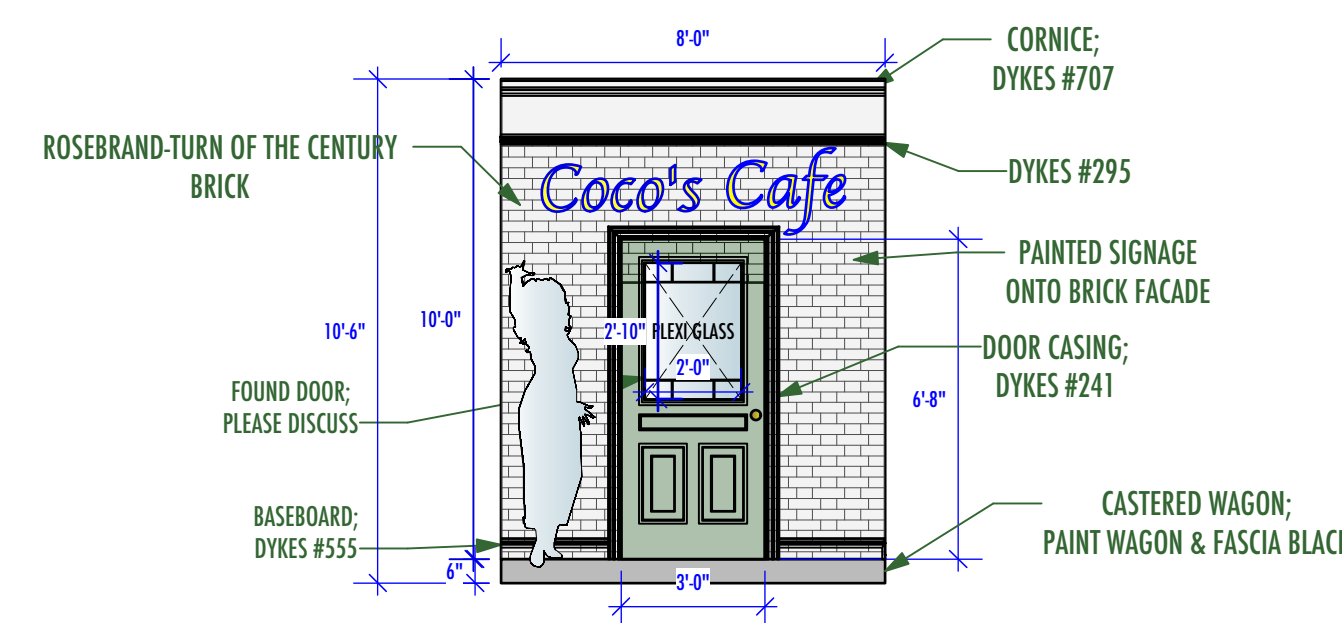
"ACADIAN HOUSE"-REFERENCE IMAGE
NOT-TO-SCALE



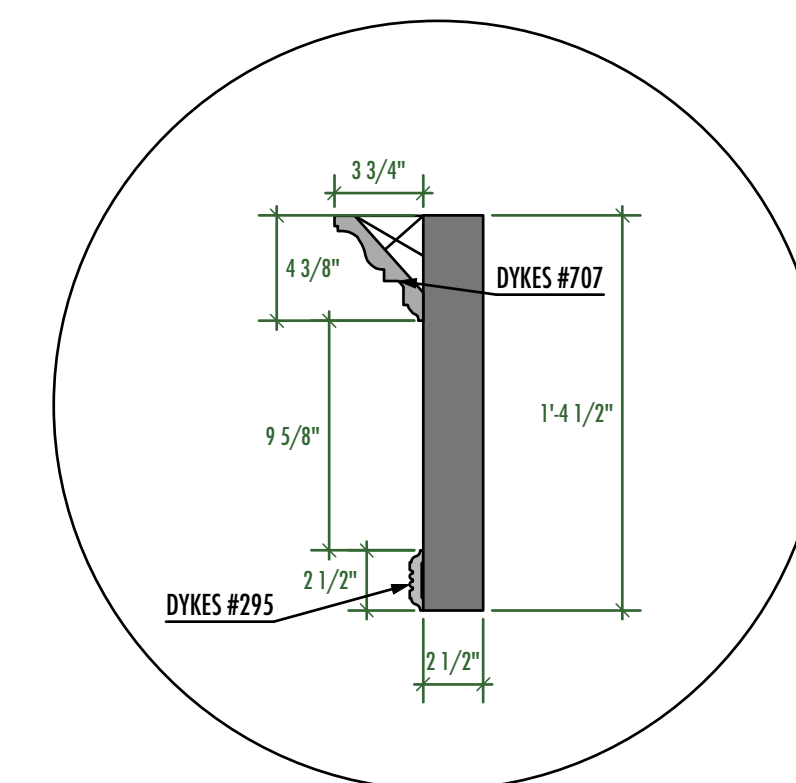
"ALLIGATOR STOMP"-PLAN VIEW
Scale: 1/4" = 1'-0"



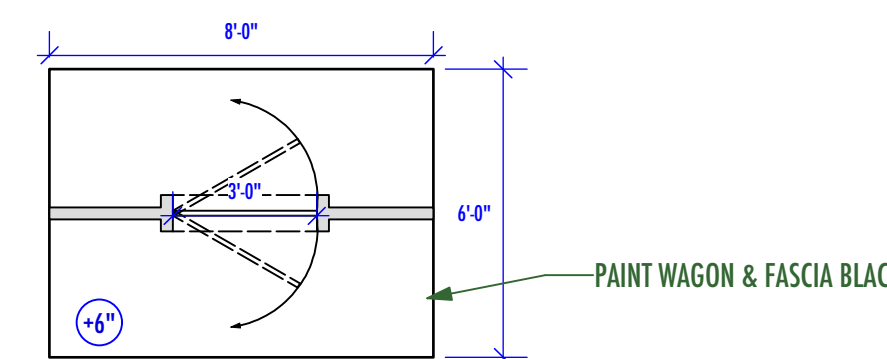
"COCO'S CAFE"-PLAN VIEW
Scale: 1/4" = 1'-0"



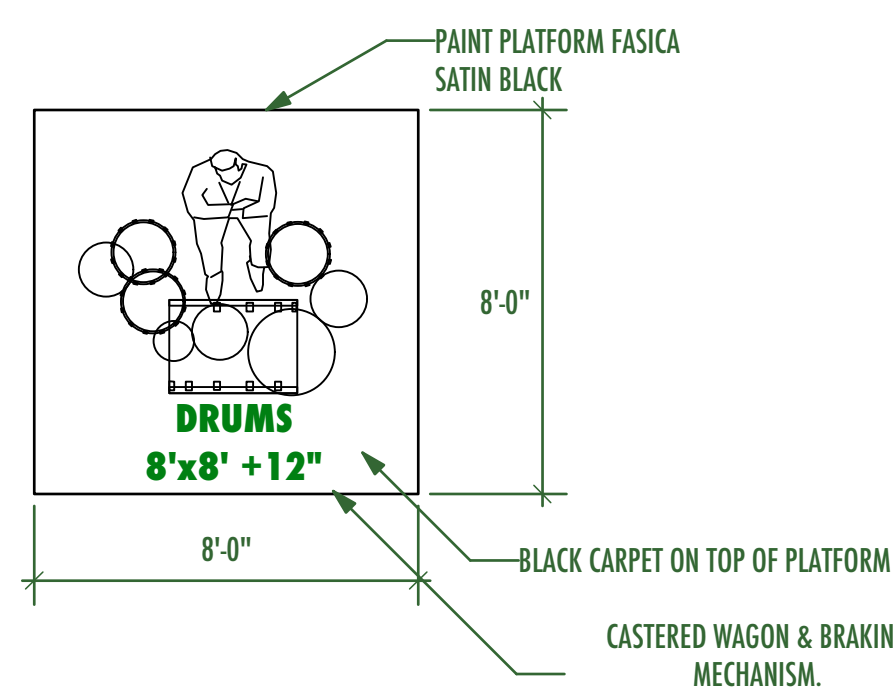
"FLIP DOOR SIDE #1"-FRONT ELEVATION
Scale: 1/4" = 1'-0"



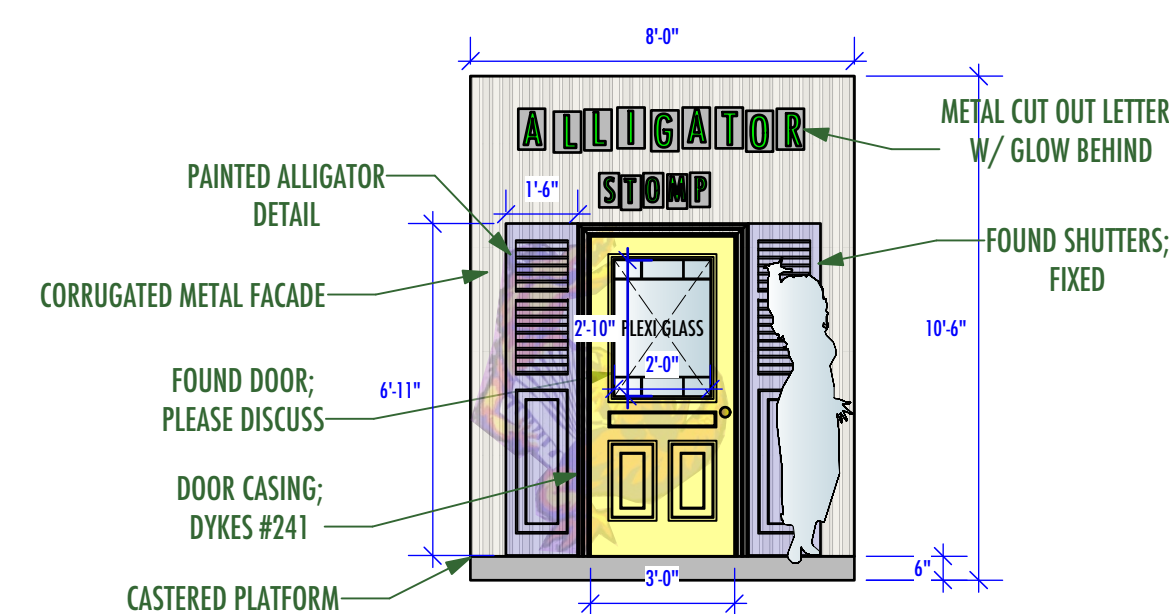
"COCO'S CAFE"-CORNICE DETAIL
Scale: 2" = 1'-0"



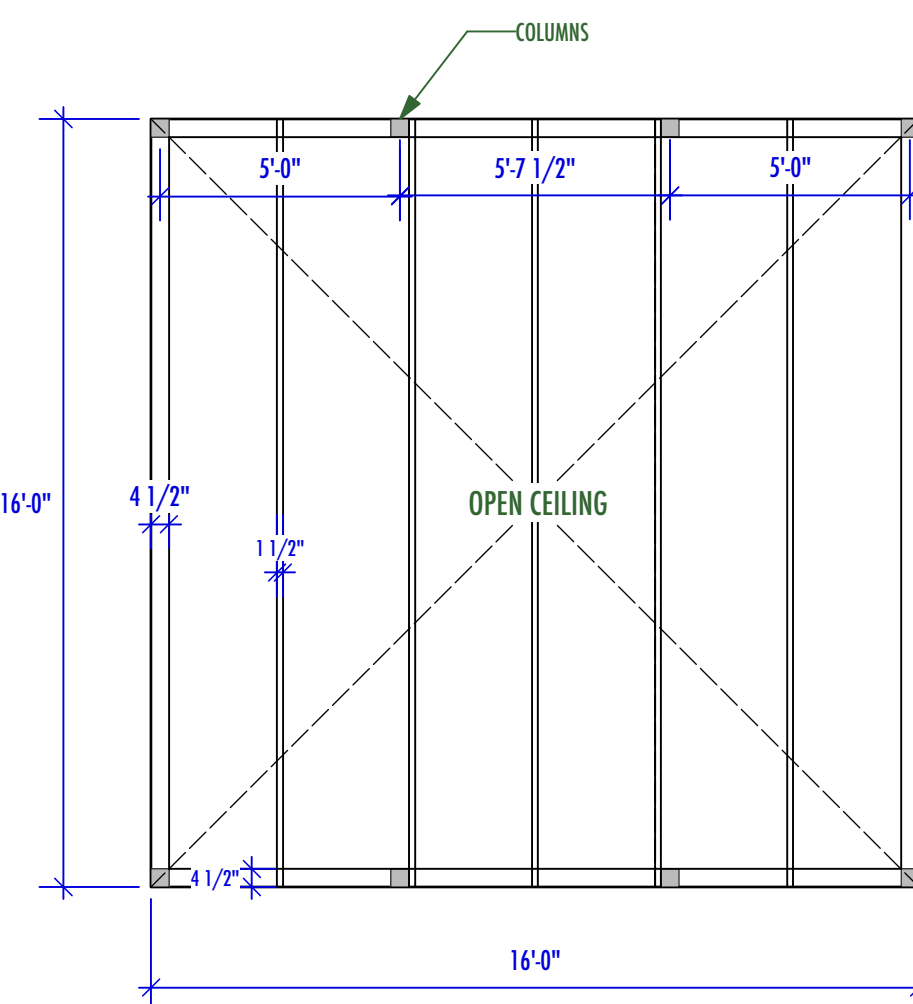
"FLIP DOOR"-PLAN VIEW
Scale: 1/4" = 1'-0"



"DRUM KIT RISER"-PLAN VIEW
Scale: 1/4" = 1'-0"



"FLIP DOOR SIDE #2"-FRONT ELEVATION
Scale: 1/4" = 1'-0"

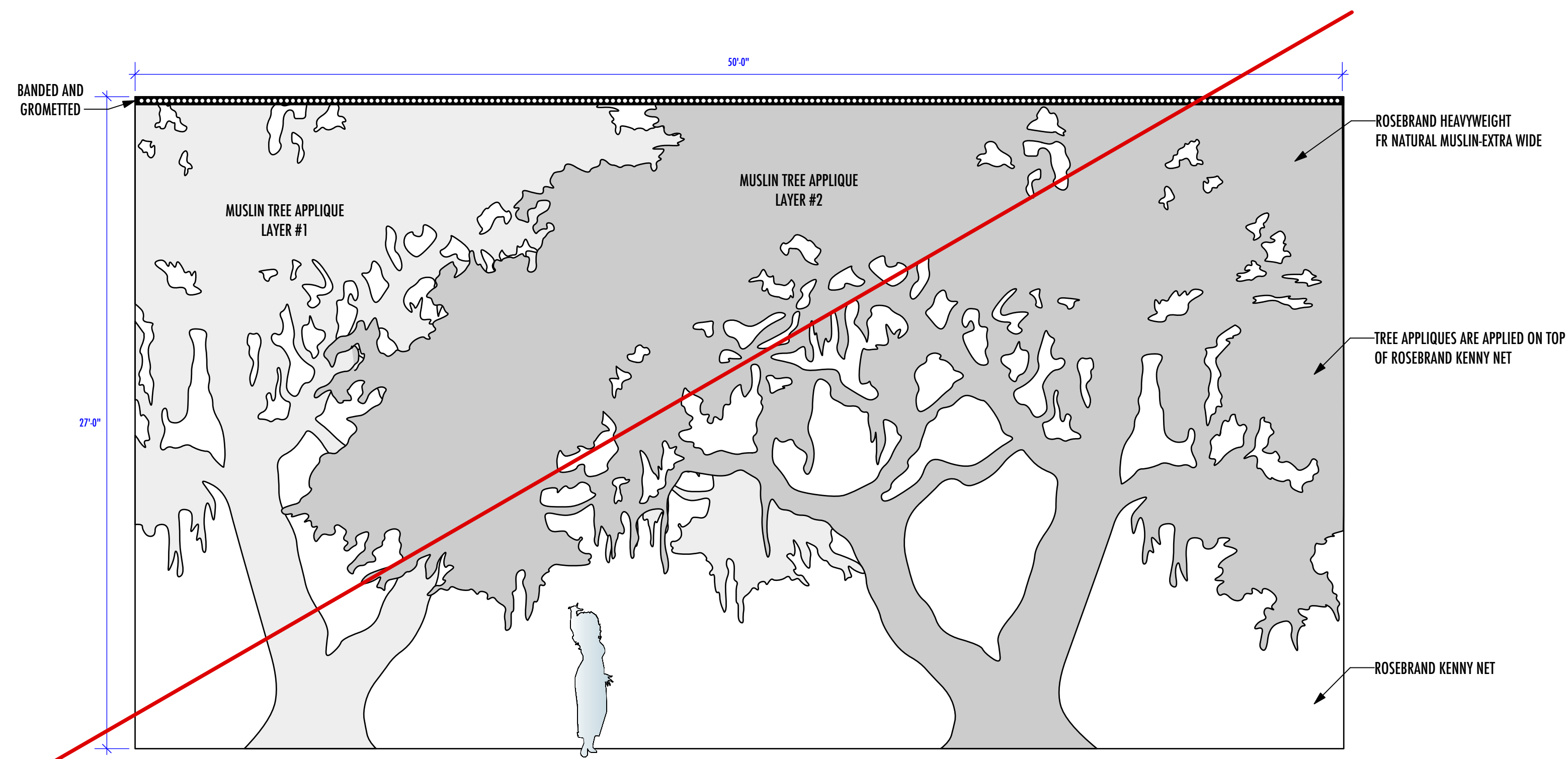


"ACADIAN HOUSE"-CEILING LAYOUT
Scale: 1/4" = 1'-0"

REVISED 08.03.16

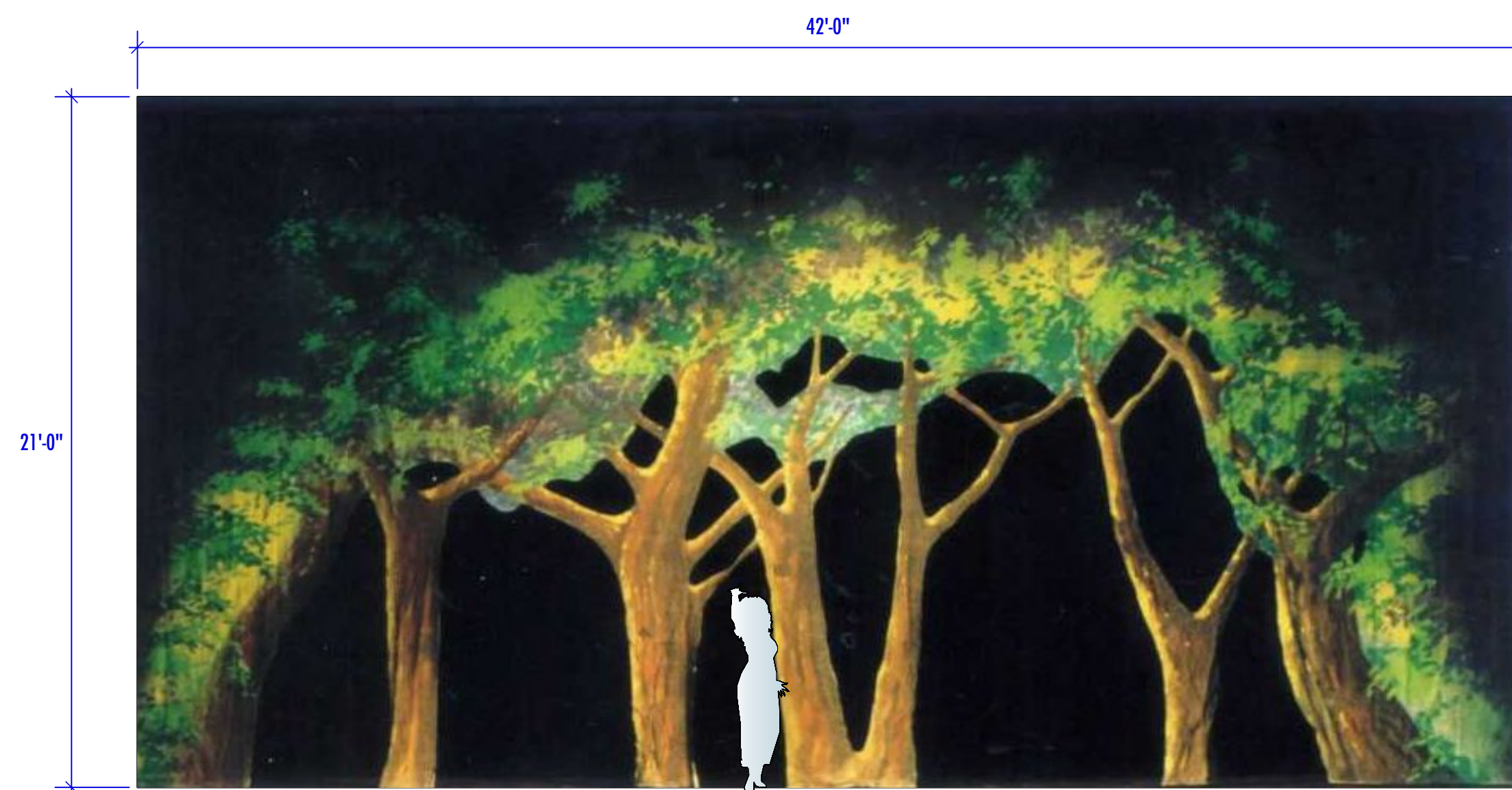
JOHN JOE SHAFFNER STEWART PRODUCTION DESIGN		1
JAMBALAYA		
ELEVATIONS	DRAWN BY: JOE SARNO	
PRELIMINARY	DRAWN: 04/28/16	
THE HEYMANN CENTER	SCALE: 1/4" = 1'-0"	
NANCY GREGORY	SEPTEMBER 2016	
9080 WONDERLAND PARK AVENUE LA, CA 90046 323-650-6939 FAX 323-650-4807		





"BAYOU DROP"-FRONT ELEVATION
Scale: 1/4" = 1'-0"

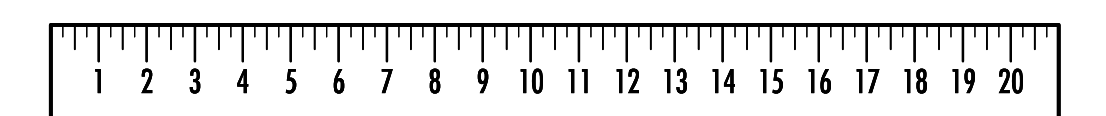
CUT AS OF 08.03.16



FCLO MUSIC THEATRE RENTAL DROP:
#D141 CUT TREE DROP
<http://www.sys.fclo.com/rentals/rentals.php?show=25>

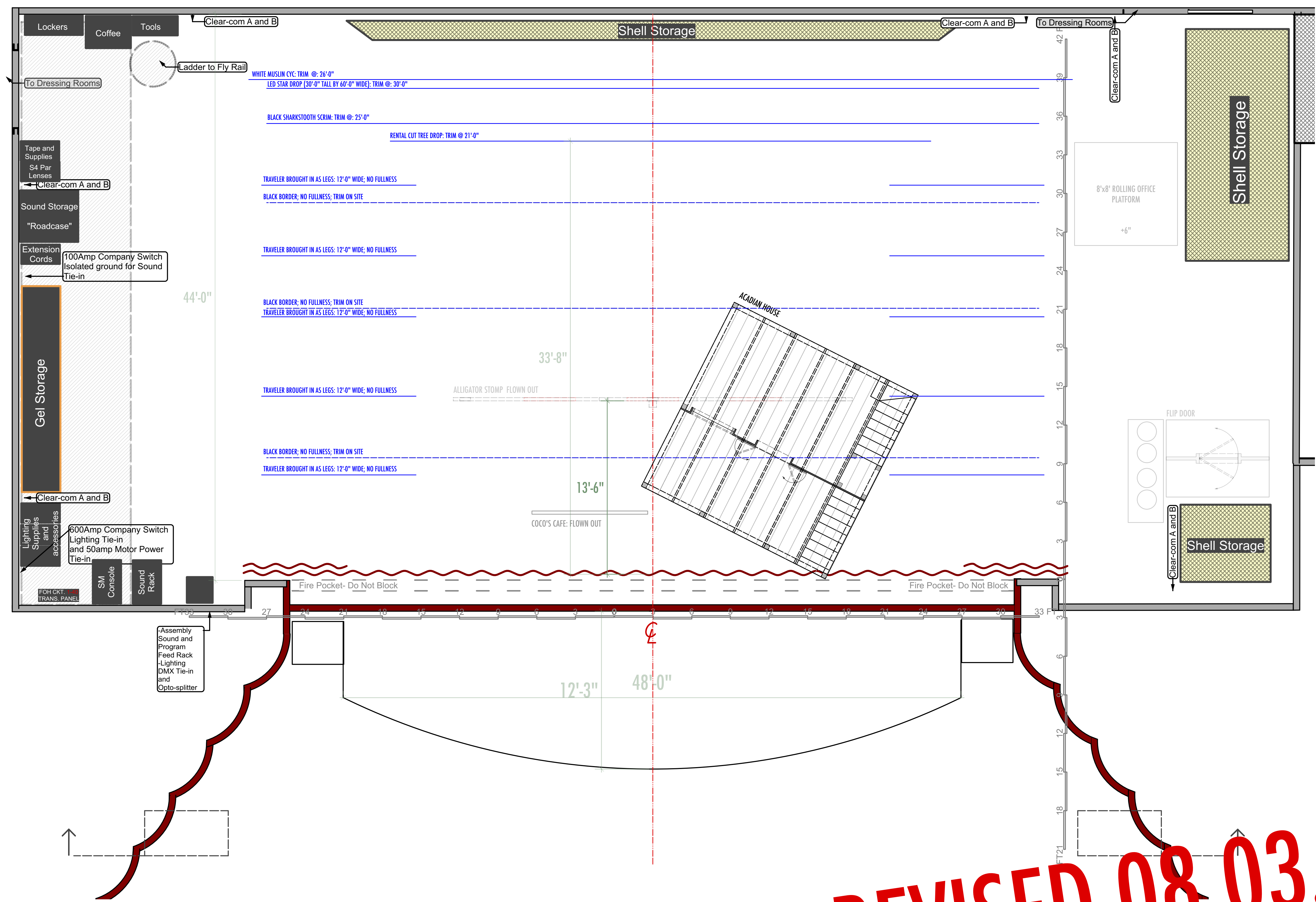
"CUT TREE DROP-RENTAL"-FRONT ELEVATION
Scale: 1/4" = 1'-0"

REVISED 08.03.16



FOR BUDGET ONLY

DESCRIPTION	D TO PL	Arbor Wt.	#
WHITE MUSLIN CYC	+39'-0"		41
STAIR DROP	+38'-4"		40
BLACK SCRM	+35'-0"		39
CUT TREE DROP	+34'-4"		38
#4 MOTORIZED LS	+33'-1"		37
#5 TRAVELER	+31'-0"		36
#3 Black Border	+29'-0"		35
	+28'-0"		34
	+27'-7"		32
	+27'-0"		31
	+26'-4"		30
#4 TRAVELER	+25'-0"		29
	+25'-0"		28
#3 ELECTRIC	+23'-0"		27
	+22'-4"		26
#2 Black Border	+21'-0"		25
#3 TRAVELER	+21'-0"		24
	+20'-4"		23
	+19'-8"		22
	+19'-0"		21
	+18'-4"		20
	+17'-8"		19
	+17'-1"		18
	+16'-4"		17
#2 TRAVELER	+15'-0"		16
	+15'-0"		15
#2 ELECTRIC	+13'-2"		14
	+11'-8"		13
	+11'-0"		12
#1 Black Border	+10'-4"		11
	+9'-8"		10
#1 TRAVELER	+8'-11"		9
	+8'-4"		8
	+7'-8"		7
	+7'-0"		6
	+6'-4"		5
	+6'-1"		4
#1 ELECTRIC	+5'-10"		3
MAIN CURTAIN	+2'-4"		2
VALANCE	+1'-7"		1
DESCRIPTION	D TO PL	TRIM	#



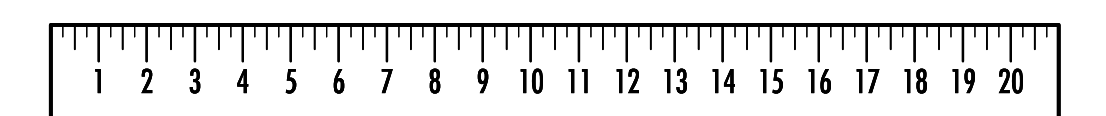
REVISED 08.03.16

JOHN | JOE
 SHAFFNER | STEWART
 PRODUCTION DESIGN

A

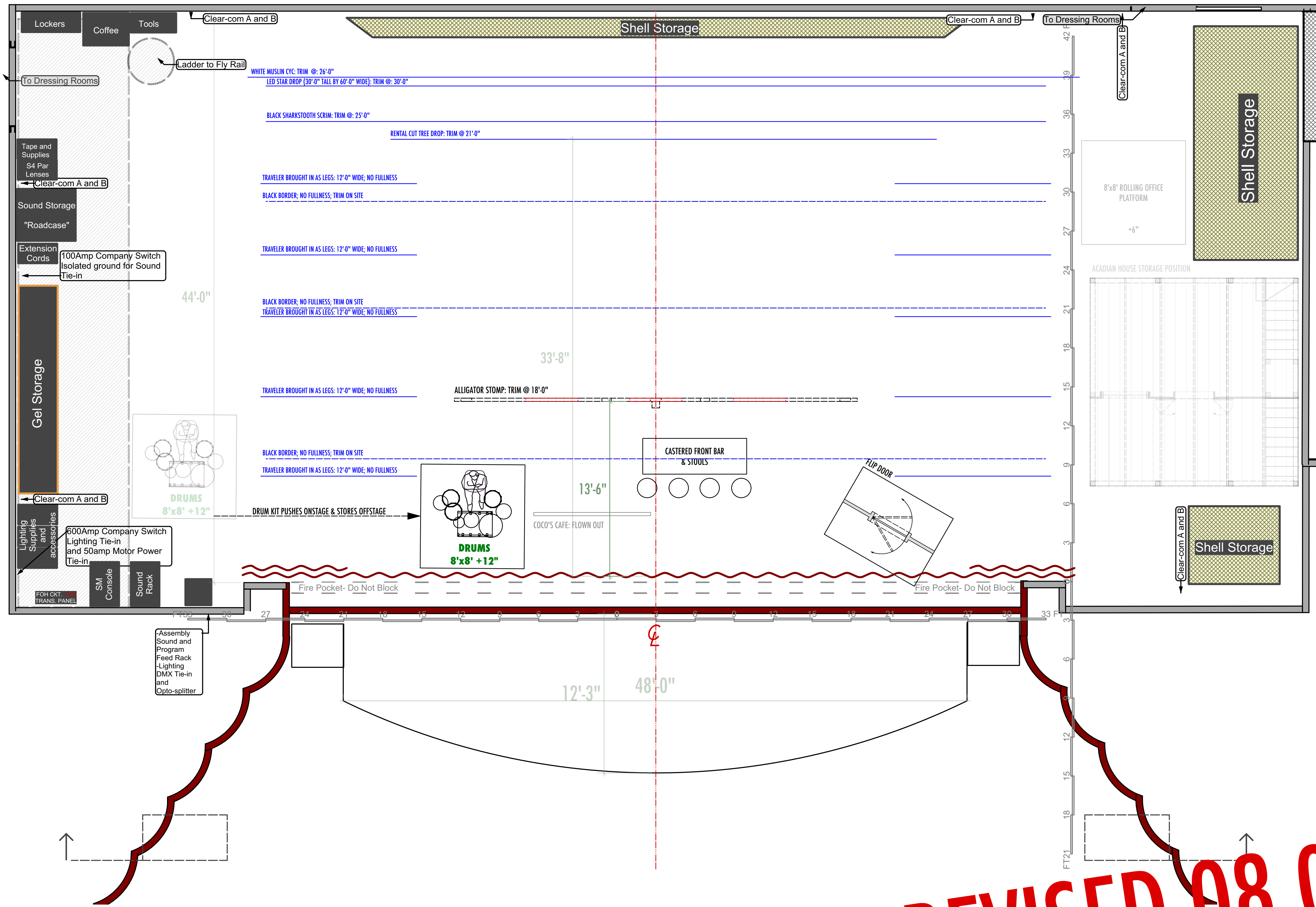
JAMBALAYA
 ACADIAN HOUSE GROUNDPLAN
 PRELIMINARY DRAWINGS
 THE HEYMANN CENTER
 NANCY GREGORY
 9080 WONDERLAND PARK AVENUE | LA, CA 90046 | 323-650-6939 | FAX 323-650-4807

DRAWN BY: JOEY SARNO
 DRAWN: 04/28/16
 SCALE: 1/4"=1'-0"
 SEPTEMBER 2016



FOR BUDGET ONLY

DESCRIPTION	D TO PL	Arbor Wt.	#
WHITE MUSLIN CYC	+39'-0"		41
STAR DROP	+38'-4"		40
BLACK SCRM	+35'-8"		39
CUT TREE DROP	+34'-4"		38
#4 MOTORIZED LS	+33'-1"		37
#5 TRAVELER	+31'-0"		36
#3 Black Border	+29'-8"		35
	+29'-0"		34
	+28'-4"		33
	+27'-7"		32
	+27'-0"		31
	+26'-4"		30
#4 TRAVELER	+25'-8"		29
	+25'-0"		28
#5 ELECTRIC	+23'-8"		27
	+22'-4"		26
#2 Black Border	+21'-8"		25
#3 TRAVELER	+21'-0"		24
	+20'-4"		23
	+19'-8"		22
	+19'-0"		21
	+18'-4"		20
	+17'-8"		19
	+17'-1"		18
	+16'-4"		17
	+15'-8"		16
#2 TRAVELER	+15'-0"		15
#2 ELECTRIC	+13'-2"		14
	+11'-8"		13
	+11'-0"		12
#1 Black Border	+10'-4"		11
	+9'-8"		10
#1 TRAVELER	+8'-11"		9
	+8'-4"		8
	+7'-8"		7
	+7'-0"		6
	+6'-4"		5
	+6'-1"		4
#1 ELECTRIC	+5'-10"		3
MAN CURTAIN	+2'-4"		2
VALANCE	+1'-7"		1
DESCRIPTION	D TO PL	TRIM	#



REVISED 08.03.16

JOHN | JOE
SHAFFNER | STEWART
PRODUCTION DESIGN

B

JAMBALAYA
"ALLIGATOR STOMP" GROUNDPLAN
PRELIMINARY
THE HEYMANN CENTER
NANCY GREGORY
9080 WONDERLAND PARK AVENUE | LA, CA 90046 | 323-650-6939 | FAX 323-650-4807

DRAWN BY: JOE SARNO
DRAWN: 04/28/16
SCALE: 1/4"=1'-0"
SEPTEMBER 2016

